

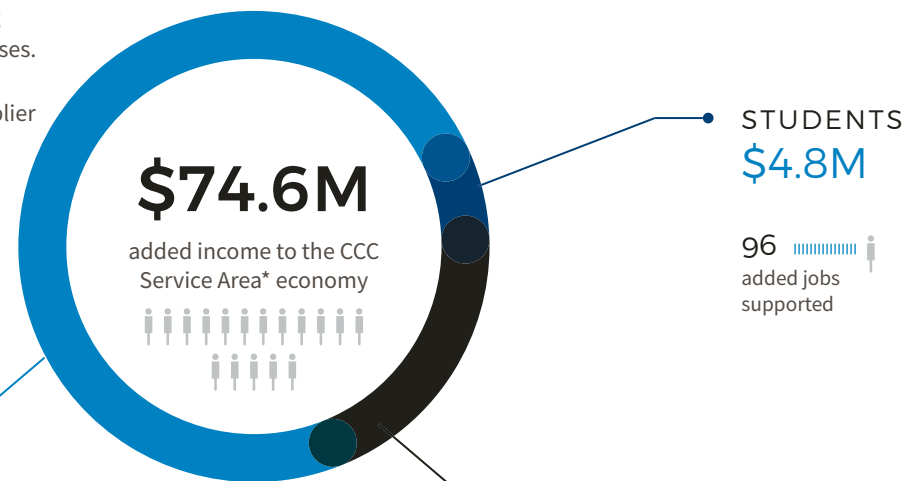
# Clovis Community College

## The economic impact of Clovis Community College

FY 2015-2016

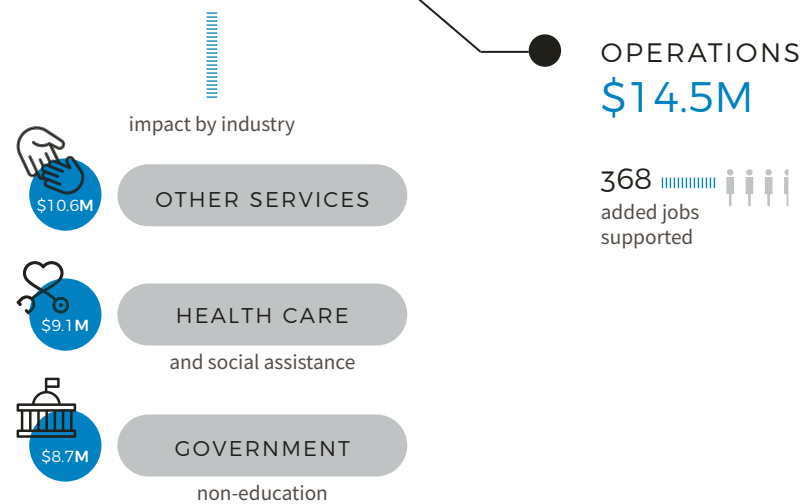
CCC promotes economic growth from various perspectives. The College is an employer and buyer of goods and services, and the living expenses of students benefit local businesses. In addition, CCC is a primary source of education to our area residents and a supplier of trained workers to regional industries.

10 jobs



ALUMNI \$55.3M

1,217 added jobs supported



\* SERVICE AREA: Colfax, Curry, De Baca, Guadalupe, Harding, Lincoln, Quay, Roosevelt, and Union Counties (NM). Deaf Smith and Parmer Counties (TX)

Since 1990, Clovis Community College (CCC) has made a strong economic impact on our community. An independent study by Emsi (Economic Model Specialist Intl) evaluating the 2015 – 2016 fiscal year, has shown the overall positive influence that CCC has on the community, affecting not only students but employers, businesses, and taxpayers.

CCC prepares students for the next steps in their careers, whether that be in a technical field, with an associate's degree or a certificate, or guiding them toward their next step at a four-year university to obtain a bachelor's degree. CCC students, alumni, and staff create a positive influence on the community by providing a highly skilled workforce and bringing new residents to the community. Clovis Community College president, Dr. Becky Rowley, explains CCC's influence on local and transplant students: "CCC draws many students and faculty to the region. Around 24% of students attending CCC originated from outside the region. Of those students who relocated to the area, these relocated and retained students spent \$21.1 million to purchase groceries, rent, and transportation."

CCC continues to boost our local community as well as our local businesses. "People in Eastern New Mexico know about Clovis Community College, and they generally know that we educate a lot of nurses, but I don't think many people realize the extent of our impact. Not only do we educate most of the nurses, radiographers, and physical therapist assistants, but CCC also generates over \$55 million in added income for alumni in our region," states Dr. Rowley. CCC's Nursing program is just one of their many programs that has added to growth of local and regional businesses.

Jorge Cruz, Chief Nurse Executive at Plains Regional Medical Center (PRMC), is a CCC Nursing program alumnus and has continued his nursing journey at PRMC, long term partner with CCC's nursing program. "As a former graduate of CCC's Nursing program, it holds a special place in my heart. Clovis Community College's Nursing program has become a pipeline of nursing talent for Plains Regional Medical Center. You could make an argument that PRMC and CCC's partnership is one of the more important partnerships that exist within our hospital. A large percentage of the nurses employed at PRMC are former graduates of CCC. Together we will continue to strive to offer our community services that they can be proud of."

## The investment analysis of Clovis Community College

FY 2015-2016

The total costs are evaluated against the total benefits generated by CCC. This investment is analyzed from the perspective of those benefiting from it: students, taxpayers, and society as a whole.

