

# SPRING 2022

## COURSE SCHEDULES



Revised Oct 19, 2021

Call or text **Clovis Community College** at **575.479.5006** or email **recruitment@clovis.edu** to set up your personalized journey today.

### **STEP 1: APPLY FOR ADMISSION**

Visit **clovis.edu/apply** to apply online or fill out an application on campus. Send all official transcripts to **admissions@clovis.edu**.

### **STEP 2: COMPLETE FINANCIAL AID**

Go to **studentaid.gov** to complete the Free Application for Federal Student Aid (FAFSA). For more information on financial aid or scholarships, call **575.769.4060** or email **finaid@clovis.edu**.

### **STEP 3: CONNECT WITH CAREER SERVICES**

Unsure of what to study? Meet with the Career Services Coordinator to complete the Career Interest Inventory. Call **575.769.4085** or email **career.services@clovis.edu** to schedule an appointment.

### **STEP 4: MEET WITH YOUR ADVISOR**

Advisors can help interpret placement scores, evaluate transcripts from other schools and assist in selecting classes for the upcoming semester. Call **575.769.4020** or email **academic.advising@clovis.edu** to schedule an appointment.

### **STEP 5: MAKE PAYMENT ARRANGEMENTS**

For more information regarding payment, please contact the Business Office at **575.769.4035** or visit **clovis.edu/payment**.

### **STEP 6: GET YOUR STUDENT ID**

Say cheese! Once payment arrangements have been made, obtain a student ID card by visiting Campus Security. Your student ID is needed at the library, gym, computer labs, and more!

## IMPORTANT DATES

Spring Registration begins  
November 8, 2021.

Senior Citizen registration begins on  
November 9 and ends on the last day of  
registration for the term listed below.

Classes start January 18.

Super Saturday Registration:  
January 8 and 15, 10:00 am to 3:00 pm.

### Classes Begin/End

Regular 16-week term . . . . . January 18 - May 13  
First 8-week term . . . . . January 18 - March 11  
Second 8-week term . . . . . March 14 - May 13

### Last day to register, add, or drop a class or change from audit to credit

Regular 16-week term . . . . . January 24  
First 8-week term . . . . . January 24  
Second 8-week term . . . . . March 18

### Last day to change from credit to audit

Regular 16-week term . . . . . March 11  
First 8-week term . . . . . February 11  
Second 8-week term . . . . . April 15

### Last day to withdraw from a class

Regular 16-week term . . . . . April 15  
First 8-week term . . . . . February 25  
Second 8-week term . . . . . April 29  
(Workshops: before the first meeting)

### Finals Week:

You may have a different class meeting time during Finals  
Week. Please check your course syllabus for details.

### Holiday Closures (Campus Closed)

Martin Luther King Jr. Holiday . . . . . January 17  
Spring 2022 Skillfest . . . . . March 4  
Spring Break . . . . . March 21 - 25

### Ceremony

Rad Tech Pinning Ceremony . . . . . May 12  
Nurses' Pinning Ceremony . . . . . May 12  
Spring Graduation Ceremony . . . . . May 13

### Graduation Application Deadline

Spring 2022 Diploma/Certificate . . . . . April 1

### Refund Schedule

Full refund of tuition and fees will be issued on canceled  
classes. Refunds are processed after registration closes  
and financial aid is complete and will be mailed to students  
approximately four weeks after registration closes.

If you have any questions, contact the Business Affairs Office  
at [575.769.4132](tel:575.769.4132) or see [www.clovis.edu/fees](http://www.clovis.edu/fees).

Students who drop a workshop must notify the Business  
Affairs Office to begin the refund process.

### Regular 16-Week Term

January 18 - February 1 . . . . . 100% refund  
February 2 - May 13 . . . . . 0% refund

### First 8-Week Term

January 18 - 24 . . . . . 100% refund  
January 25 - March 11 . . . . . 0% refund

### Second 8-Week Term

March 14 - 18 . . . . . 100% refund  
March 19 - May 13 . . . . . 0% refund

### Workshops

Before the first meeting . . . . . 100% refund

### Final Exams

Regular 16-week term . . . . . May 9 - 13  
First 8-week term . . . . . March 7 - 11  
Second 8-week term . . . . . May 9 - 13

This class schedule is subject to change after publication. Please check for  
changes with the Academic Advising Office or the CCC website for the most up-to-  
date course information. Consumer information for Clovis Community College,  
including our graduation rates, the median debt of students completing programs,  
and other important information, can be found at: [clovis.edu/consumerinfo](http://clovis.edu/consumerinfo).



# CLOVIS COMMUNITY COLLEGE COURSE MODELS AT-A-GLANCE

## WHERE



BRICK-AND-MORTAR



VIRTUAL LEARNING ENVIRONMENT

## WHEN



AT A SCHEDULED TIME



AT STUDENT'S OWN TIME  
Assignment deadlines determined by instructor

## HOW



ON-SITE CLASSROOM TECHNOLOGY



MOBILE TECHNOLOGY

## ON CAMPUS



## LIVE ONLINE



## FULLY ONLINE



## HYBRID | Both Required

### ON CAMPUS



### ONLINE



## MIXED | Student decides based on modes defined by instructor

### ON CAMPUS



OR

### LIVE ONLINE



OR

### FULLY ONLINE



## Clovis Community College

Course Modes Info-graphic Text Description.

### WHERE

1. On Campus - at Clovis Community College
2. Online - Virtual Learning Environment

### WHEN

1. Live - at a designated, scheduled time
2. Online - at the student's own time

### HOW

1. On-site Classroom Technology
2. Mobile Technology (home computer, mobile phone, laptop)

## Course Model Descriptions

### On Campus

- Where: All class time spent on CCC campus
- When: Live, at a designated, scheduled time
- How: Using on-site classroom technology

### Live Online

- Where: All class time spent in a virtual learning environment
- When: Live, at a designated, scheduled time
- How: Using mobile technology

### Fully Online

- Where: All class time spent in a virtual learning environment
- When: Online, at the student's own time (assignment deadlines specified by instructor)
- How: Using mobile technology

### Hybrid

- Where: Portion of the course is spent on campus, and portion is spent online in a virtual learning environment
- When: Class time occurs with a mix of designated, scheduled time and work at the student's own time
- How: Using both on-site classroom and mobile technology

### Mixed

- Instructor defines the mode; Student decides how to participate
- On Campus - At a designated, scheduled time
  - Live Online - at a designated, scheduled time
  - Fully Online - completed on the student's own time (assignment deadlines specified by instructor)

## Accounting

CRN	SUBJ	NUM	SEC	HRS	TITLE	DAYS	TIME	INSTRUCTOR	FEES	COURSE MODE OPTIONS			
										ON CAMPUS	LIVE ONLINE	ONLINE	HYBRID
11853	ACCT	2110	101	4	Principles of Accounting I	MW	12:00 pm - 1:40 pm	Turner, Monica		x			
11854	ACCT	2110	1N0	4	Principles of Accounting I		ONLINE	Turner, Monica	\$50			x	
11855	ACCT	2120	1N0	4	Principles of Accounting II		ONLINE	Turner, Monica	\$50			x	
12220	ACCT	2410	1E0	3	Personal Tax Preparation			Turner/Reed		x			
					1/10-1/14	M-F	5:00 pm - 9:00 pm						
					1/15	S	8:00 am - 5:00 pm						

Twenty hours of tax preparation required February through April 2022. For more information, please call Monica Turner at 575.769.4948 or Melissa Reed at 575.769.4967.

## Anthropology

CRN	SUBJ	NUM	SEC	HRS	TITLE	DAYS	TIME	INSTRUCTOR	FEES	COURSE MODE OPTIONS			
										ON CAMPUS	LIVE ONLINE	ONLINE	HYBRID
11856	ANTH	1140	1N0	3	Intro to Cultural Anthropology		ONLINE	Schipani, Alexandra	\$50			x	
11857	ANTH	1180	1N0	3	The Dawn of Humanity		ONLINE	Schipani, Alexandra	\$50			x	

## Art History

CRN	SUBJ	NUM	SEC	HRS	TITLE	DAYS	TIME	INSTRUCTOR	FEES	COURSE MODE OPTIONS			
										ON CAMPUS	LIVE ONLINE	ONLINE	HYBRID
11863	ARTH	1110	1N0	3	Art Appreciation		ONLINE	Anderson, Marsha	\$50			x	
12373	ARTH	2120	1Z0	3	History of Art II	W	6:00 pm - 8:30 pm	Bermudez, Stanley	\$25	x	x	x	

## Art Studio

CRN	SUBJ	NUM	SEC	HRS	TITLE	DAYS	TIME	INSTRUCTOR	FEES	COURSE MODE OPTIONS			
										ON CAMPUS	LIVE ONLINE	ONLINE	HYBRID
12259	ARTS	1240	101	3	Design I	MW	9:00 am - 10:15 am	Hancock, Heather		x			
12350	ARTS	1250	101	3	Design II	TR	9:00 am - 10:15 am	Bermudez, Stanley		x			
11873	ARTS	1320	101	3	Ceramics I	M	6:00 pm - 8:30 pm	TBD	\$20	x			
11870	ARTS	1340	101	3	Functional Ceramics I	M	3:00 pm - 5:30 pm	TBD	\$20	x			
12374	ARTS	1410	1Z0	3	Introduction to Photography	T	6:00 pm - 8:30 pm	Cross, Cristy	\$25	x	x	x	
ARTS 1410 classes require specific camera equipment. For more information, please call Stanley Bermudez at 575.769.4957 or 575.769.4932.													
12402	ARTS	1520	1Z0	3	Digital Media I	TR	1:30 pm - 2:45 pm	Hurlebusch, Judith	\$25	x	x	x	
12375	ARTS	1530	1Z0	3	Digital Media II	TR	3:00 pm - 4:15 pm	Hurlebusch, Judith	\$25	x	x	x	
11859	ARTS	1610	101	3	Drawing I	MW	10:30 am - 11:45 am	Hancock, Heather		x			
11866	ARTS	1630	101	3	Painting I	TR	10:30 am - 11:45 am	Bermudez, Stanley		x			
12376	ARTS	2120	1Z0	3	Graphic Design I	MW	1:30 pm - 2:45 pm	Hurlebusch, Judith	\$25	x	x	x	
11874	ARTS	2340	101	3	Raku	M	6:00 pm - 8:30 pm	TBD	\$20	x			
11860	ARTS	2610	101	3	Drawing II	MW	12:00 pm - 1:15 pm	Bermudez, Stanley		x			
11869	ARTS	2614	101	3	Drawing & Painting Adv Project		TBA	TBD		x			
11867	ARTS	2630	101	3	Painting II	TR	10:30 am - 11:45 am	Bermudez, Stanley		x			
11868	ARTS	2639	101	3	Advanced Painting	TR	1:30 pm - 2:45 pm	Bermudez, Stanley		x			
12217	ARTS	2996	101	3	Tps in Art: Alt Print Process	M	6:00 pm - 8:30 pm	Dart, Robert	\$45	x			

## Automotive Technology

CRN	SUBJ	NUM	SEC	HRS	TITLE	DAYS	TIME	INSTRUCTOR	FEES	COURSE MODE OPTIONS			
										ON CAMPUS	LIVE ONLINE	ONLINE	HYBRID
10472	AT	100	101	4	Intro to Auto Electronics	T	6:00 pm - 9:15 pm	Blair, Paul	\$40	x			

Other than the Automotive classes listed above the full-time Automotive Technology program runs Monday - Thursday from 7 a.m. to 12:15 p.m. To apply students should call 575.769.4945 or stop by Room 403. Students must complete AT 100 with a C or better, complete an OT application, and meet the Accuplacer score requirements prior to being accepted into the program. Applications are now being accepted for Spring 2022.

## Biology

CRN	SUBJ	NUM	SEC	HRS	TITLE	DAYS	TIME	INSTRUCTOR	FEES	COURSE MODE OPTIONS			
										ON CAMPUS	LIVE ONLINE	ONLINE	HYBRID
11887	BIOL	1110C	101	4	General Biology Lecture/Lab	MW	12:00 pm - 2:30 pm	Newton, Joy	\$20	x			
11888	BIOL	1110C	1N0	4	General Biology Lecture/Lab		ONLINE	Sloan, Nancy	\$50			x	
11889	BIOL	1130C	1N0	4	Intro Anat/Phys Lec/Lab NonMaj		ONLINE	Newton, Joy	\$50			x	
11890	BIOL	2210C	101	4	Human Anat/Phys I Lec/Lab	MW	9:00 am - 11:30 am	Newton, Joy	\$20	x			
11891	BIOL	2210C	102	4	Human Anat/Phys I Lec/Lab	MW	12:00 pm - 2:30 pm	TBD	\$20	x			
11892	BIOL	2210C	103	4	Human Anat/Phys I Lec/Lab	MW	3:00 pm - 5:30 pm	Roberts, Cory	\$20	x			
11893	BIOL	2210C	104	4	Human Anat/Phys I Lec/Lab	MW	6:00 pm - 8:30 pm	Minteer, Allison	\$20	x			
12239	BIOL	2210C	105	4	Human Anat/Phys I Lec/Lab	TR	9:00 am - 11:30 am	Newton, Joy	\$20	x			
11897	BIOL	2210C	1N0	4	Human Anat/Phys I Lec/Lab		ONLINE	Roberts, Cory	\$50			x	
11899	BIOL	2225C	101	4	Human Anat/Phys II Lec/Lab	TR	12:00 pm - 2:30 pm	Roberts, Cory	\$20	x			
11898	BIOL	2225C	102	4	Human Anat/Phys II Lec/Lab	TR	3:00 pm - 5:30 pm	Newton, Joy	\$20	x			
11900	BIOL	2225C	103	4	Human Anat/Phys II Lec/Lab	TR	6:00 pm - 8:30 pm	Minteer, Allison	\$20	x			
11901	BIOL	2225C	1N0	4	Human Anat/Phys II Lec/Lab		ONLINE	Roberts, Cory	\$50			x	
11902	BIOL	2310C	101	4	Microbiology Lecture/Lab	MW	6:00 pm - 8:30 pm	Hughes, Michelle	\$20	x			
11903	BIOL	2310C	102	4	Microbiology Lecture/Lab	TR	9:00 am - 11:30 am	Hughes, Michelle	\$20	x			
11904	BIOL	2310C	103	4	Microbiology Lecture/Lab	TR	12:00 pm - 2:30 pm	Hughes, Michelle	\$20	x			
11905	BIOL	2310C	1N0	4	Microbiology Lecture/Lab		ONLINE	Hughes, Michelle	\$50			x	
12409	BIOL	2410C	101	4	Principles of Bio:Genetics/Lab	MW	12:00 pm - 2:30 pm	Roberts, Cory	\$20	x			

## Business Administration

CRN	SUBJ	NUM	SEC	HRS	TITLE	DAYS	TIME	INSTRUCTOR	FEES	COURSE MODE OPTIONS			
										ON CAMPUS	LIVE ONLINE	ONLINE	HYBRID
11906	BUSA	1110	101	3	Introduction to Business	TR	10:30 am - 11:45 am	Reed, Melissa		x			
11907	BUSA	1110	1N0	3	Introduction to Business		ONLINE	Reed, Melissa	\$50			x	
12237	BUSA	2110	1N0	3	Business Communications		ONLINE	Schmidt, Michelle	\$50			x	
12224	BUSA	2999	1N0	2	Programmatic Capstone		ONLINE	Kuykendall, Reed, Turner	\$50			x	

## Business Computer Information Systems

CRN	SUBJ	NUM	SEC	HRS	TITLE	DAYS	TIME	INSTRUCTOR	FEES	COURSE MODE OPTIONS			
										ON CAMPUS	LIVE ONLINE	ONLINE	HYBRID
12128	BCIS	1110	101	3	Fund of Info Literacy/Systems	W	6:00 pm - 8:30 pm	TBD		x			
12129	BCIS	1110	102	3	Fund of Info Literacy/Systems	MW	10:30 am - 11:45 am	Burningham, John		x			
12130	BCIS	1110	1N0	3	Fund of Info Literacy/Systems		ONLINE	Davis, Patrick	\$50			x	

BCIS 1110 covers the Microsoft Office 2019/Office 365 Windows versions of Word, Excel, Access, and PowerPoint.

## Business Finance

CRN	SUBJ	NUM	SEC	HRS	TITLE	DAYS	TIME	INSTRUCTOR	FEES	COURSE MODE OPTIONS			
										ON CAMPUS	LIVE ONLINE	ONLINE	HYBRID
11909	BFIN	2110	1N0	3	Introduction to Finance		ONLINE	Walley, Katrina	\$50			X	

## Business Law

CRN	SUBJ	NUM	SEC	HRS	TITLE	DAYS	TIME	INSTRUCTOR	FEES	COURSE MODE OPTIONS			
										ON CAMPUS	LIVE ONLINE	ONLINE	HYBRID
11908	BLAW	2110	1N0	3	Business Law I		ONLINE	Talbert, Laura	\$50			X	

## Chemistry

CRN	SUBJ	NUM	SEC	HRS	TITLE	DAYS	TIME	INSTRUCTOR	FEES	COURSE MODE OPTIONS			
										ON CAMPUS	LIVE ONLINE	ONLINE	HYBRID
11913	CHEM	1120C	1N0	4	Intro to Chem Lec/Lab Non-Maj		ONLINE	Jones, Krista	\$50			X	
11915	CHEM	1215C	1N0	4	Gen Chem I Lec/Lab for STEM		ONLINE	Robino, Lilly	\$50			X	
12382	CHEM	1225C	1N0	4	Gen Chem II Lec/Lab for STEM		ONLINE	Jones, Krista	\$50			X	

## Communication

CRN	SUBJ	NUM	SEC	HRS	TITLE	DAYS	TIME	INSTRUCTOR	FEES	COURSE MODE OPTIONS			
										ON CAMPUS	LIVE ONLINE	ONLINE	HYBRID
12383	COMM	1130	101	3	Public Speaking	MW	9:00 am - 10:15 am	Regnier, Rex		X			
11921	COMM	1130	1L0	3	Public Speaking	R	6:00 pm - 8:30 pm	Regnier, Rex	\$50		X		
11924	COMM	1130	1N0	3	Public Speaking		ONLINE	Hardin, Stephen	\$50			X	
12387	COMM	2120	101	3	Interpersonal Communication	MW	10:30 am - 11:45 am	Chavez, Simon		X			
12269	COMM	2120	1L0	3	Interpersonal Communication	M	6:00 pm - 8:30 pm	Meza, Viridiana	\$50		X		
12388	COMM	2120	1L1	3	Interpersonal Communication	TR	10:30 am - 11:45 am	Chavez, Simon	\$50		X		
11920	COMM	2120	1N0	3	Interpersonal Communication		ONLINE	Hardin, Stephen	\$50			X	

## Computer Information Systems

CRN	SUBJ	NUM	SEC	HRS	TITLE	DAYS	TIME	INSTRUCTOR	FEES	COURSE MODE OPTIONS			
										ON CAMPUS	LIVE ONLINE	ONLINE	HYBRID
10090	CIS	101	1N0	3	Fund of Computer Concepts		ONLINE	Burningham, John	\$50			X	
12389	CIS	102	101	4	Networking Concepts	T	6:00 pm - 9:15 pm	Burningham, John	\$30	X			
11576	CIS	125	1N0	3	Intro to Programming Concepts		ONLINE	Davis, Patrick	\$50			X	
10734	CIS	134	1N0	4	Computer Hardware / Software		ONLINE	Walker, Raymond	\$50			X	
10735	CIS	135	1N0	4	Network Fund for Network+		ONLINE	Burningham, John	\$50			X	
10104	CIS	140	1N0	3	Intro to Word Processing		ONLINE	Davis, Terry	\$50			X	
<i>CIS 140 will be taught using the Microsoft Office 2019/Office 365 Windows versions of Word.</i>													
10105	CIS	150	1N0	3	Introduction to Spreadsheets		ONLINE	Davis, Terry	\$50			X	
<i>CIS 150 will be taught using the Microsoft Office 2019/Office 365 Windows versions of Excel.</i>													
10889	CIS	232	101	4	Serv Admin Use Micro Win Serv	R	6:00 pm - 9:15 pm	Walker, Raymond	\$30	X			
10129	CIS	235	1N0	3	Fund of Network Security		ONLINE	Burningham, John	\$50			X	

## Cosmetology

The Cosmetology program runs Monday - Thursday from 8 a.m. to 5 p.m. To apply students should call 575.769.4945 or stop by Room 403. Students will need to fill out a Cosmetology application, submit high school transcripts to the Office of Admissions, and meet the Accuplacer score requirements prior to being accepted into the program. Applications are now being accepted for Spring 2022.

## Criminal Justice

CRN	SUBJ	NUM	SEC	HRS	TITLE	DAYS	TIME	INSTRUCTOR	FEES	COURSE MODE OPTIONS			
										ON CAMPUS	LIVE ONLINE	ONLINE	HYBRID
11934	CJUS	1110	1N0	3	Intro to Criminal Justice		ONLINE	Richeson, J	\$50			X	
11937	CJUS	1170	1N0	3	Introduction to Criminology		ONLINE	Salazar, Freddie	\$50			X	
11935	CJUS	1190	1N0	3	Intro to Protective Services		ONLINE	Salazar, Freddie	\$50			X	
11938	CJUS	2120	1N0	3	Criminal Courts & Procedure		ONLINE	Reeb, Andrea	\$50			X	
11936	CJUS	2150	1N0	3	Corrections System		ONLINE	Talbert, Laura	\$50			X	
12390	CJUS	2350	1N0	3	Organized Crime/Terrorism		ONLINE	Richeson, J	\$50			X	
12391	CJUS	2575	1N0	3	Multicultural Law Enforcement		ONLINE	Salazar, Freddie	\$50			X	

## Dance

CRN	SUBJ	NUM	SEC	HRS	TITLE	DAYS	TIME	INSTRUCTOR	FEES	COURSE MODE OPTIONS			
										ON CAMPUS	LIVE ONLINE	ONLINE	HYBRID
11940	DANC	1110	1N0	3	Dance Appreciation		ONLINE	Heath, Bradley	\$50			X	

## Early Childhood Education

CRN	SUBJ	NUM	SEC	HRS	TITLE	DAYS	TIME	INSTRUCTOR	FEES	COURSE MODE OPTIONS			
										ON CAMPUS	LIVE ONLINE	ONLINE	HYBRID
11941	ECED	1110	1N0	3	Child Growth, Dev & Learning		ONLINE	Imondi, Laura	\$50			X	
11944	ECED	1115	1N0	2	Health, Safety, & Nutrition		ONLINE	Imondi, Laura	\$50			X	
11949	ECED	1120	1N0	3	Guiding Young Children		ONLINE	Nigreville, Carrie	\$50			X	
11950	ECED	1125	1N0	3	Assessment Child/Eval Program		ONLINE	Flygare, Michelle	\$50			X	
11947	ECED	1130	1N0	3	Family & Comm Collaboration		ONLINE	Boreing, Karen	\$50			X	
11953	ECED	2110	101	2	Professionalism	R	6:00 pm - 7:40 pm	Thornton, Linda		X			
11945	ECED	2115	101	3	Intro to Lang, Literacy & Read	T	6:00 pm - 8:30 pm	Boreing, Karen		X			
11951	ECED	2130	101	3	Curr Dev/Impl Age 3 to Grde 3	M	6:45 pm - 9:15 pm	TBD		X			
11952	ECED	2131	101	2	Curr Dev Imp Age 3 Grde 3 Prac	M	5:00 pm - 6:40 pm	TBD		X			

## Economics

CRN	SUBJ	NUM	SEC	HRS	TITLE	DAYS	TIME	INSTRUCTOR	FEES	COURSE MODE OPTIONS			
										ON CAMPUS	LIVE ONLINE	ONLINE	HYBRID
11955	ECON	2110	1N0	3	Macroeconomic Principles		ONLINE	Kuykendall, Robin	\$50			X	
11956	ECON	2120	1N0	3	Microeconomic Principles		ONLINE	Kuykendall, Robin	\$50			X	



## Electrical Maintenance

The Electrical Maintenance program is part of the Industrial Technology program and trains students in fundamentals of electricity, control systems, planning, design, and power generation and prepares students for jobs that rely on integrated systems. This program is two semesters and runs Tuesdays & Thursdays from 5:30 to 9:15 p.m. To apply students should call 575.769.4945 or stop by Room 403. Students will need to fill out an OT application and meet the Accuplacer score requirements prior to being accepted into the program. Applications are now being accepted for Fall 2022.

## Emergency Medical Services

CRN	SUBJ	NUM	SEC	HRS	TITLE	DAYS	TIME	INSTRUCTOR	FEES	COURSE MODE OPTIONS			
										ON CAMPUS	LIVE ONLINE	ONLINE	HYBRID
12241	EMS	101	101	4	First Responder	M	5:00 pm - 9:00 pm	Burns, Karen	\$75	x			
12327	EMS	115	1N0	4	Anat/Phys for EMS Professional		ONLINE	Burns, Karen	\$50			x	
10775	EMS	120	101	8	Emer Medical Technician-Basic	MTR	6:00 pm - 9:30 pm	Burns, Karen	\$280	x			
11247	EMS	120L	101	3	EMT / Basic Lab	MTR	6:00 pm - 9:30 pm	Burns, Karen	\$60	x			

## English

CRN	SUBJ	NUM	SEC	HRS	TITLE	DAYS	TIME	INSTRUCTOR	FEES	COURSE MODE OPTIONS			
										ON CAMPUS	LIVE ONLINE	ONLINE	HYBRID
11958	ENGL	1110	101	3	Composition I	M	6:00 pm - 8:30 pm	Brown, Shauma		x			
11957	ENGL	1110	102	3	Composition I	W	6:00 pm - 8:30 pm	Nagy, Paul		x			
11959	ENGL	1110	103	3	Composition I	MW	9:00 am - 10:15 am	Brown, Shauma		x			
11960	ENGL	1110	104	3	Composition I	MW	10:30 am - 11:45 am	TBD		x			
11962	ENGL	1110	105	3	Composition I	TR	10:30 am - 11:45 am	Johnson, Janett		x			
11961	ENGL	1110	106	3	Composition I	TR	1:30 pm - 2:45 pm	Nagy, Paul		x			
11963	ENGL	1110	1N0	3	Composition I		ONLINE	Johnson, Janett	\$50			x	
11965	ENGL	1120	101	3	Composition II	M	6:00 pm - 8:30 pm	Hochhalter, Gina		x			
11966	ENGL	1120	102	3	Composition II	T	3:00 pm - 5:30 pm	Hochhalter, Gina		x			
11967	ENGL	1120	103	3	Composition II	MW	12:15 pm - 1:30 pm	Hochhalter, Gina		x			
11969	ENGL	1120	104	3	Composition II	TR	9:00 am - 10:15 am	Brown, Shauma		x			
11968	ENGL	1120	105	3	Composition II	TR	1:30 pm - 2:45 pm	Hochhalter, Gina		x			
11977	ENGL	1120	1N0	3	Composition II		ONLINE	Hochhalter, Gina	\$50			x	
11993	ENGL	1410	1L0	3	Introduction to Literature	TR	1:30 pm - 2:45 pm	Rapp, Gregory	\$50		x		
11992	ENGL	2380	1N0	3	Introduction to Short Fiction		ONLINE	Johnson, Janett	\$50			x	
12395	ENGL	2610	1Z0	3	American Literature I	M	6:00 pm - 8:30 pm	Rapp, Gregory	\$25	x	x	x	
12396	ENGL	2630	1Z0	3	British Literature I	T	6:00 pm - 8:30 pm	Rapp, Gregory	\$25	x	x	x	

## Esthetics/Nail Tech

The Esthetics/Nail Tech program is a combined program that runs Monday-Thursday from 8 a.m. to 5 p.m. To apply students should call 575.769.4945 or stop by Room 403. Students will need to fill out a Cosmetology application, submit high school transcripts to the Office of Admissions, and meet the Accuplacer score requirements prior to being accepted into the program. Applications are now being accepted for Fall 2022.

## Exercise Science (HPE Academic Courses)

CRN	SUBJ	NUM	SEC	HRS	TITLE	DAYS	TIME	INSTRUCTOR	FEES	COURSE MODE OPTIONS			
										ON CAMPUS	LIVE ONLINE	ONLINE	HYBRID
12216	EXSC	2110	1N0	3	Exercise Physiology		ONLINE	TBD	\$50			x	
12215	EXSC	2120	1N0	3	Structural Kinesiology		ONLINE	Heath, Bradley	\$50			x	

## First Year Experience

CRN	SUBJ	NUM	SEC	HRS	TITLE	DAYS	TIME	INSTRUCTOR	FEES	COURSE MODE OPTIONS			
										ON CAMPUS	LIVE ONLINE	ONLINE	HYBRID
12398	FYEX	1113	1L0	5	Academic Literacy	MW	6:00 pm - 8:30 pm	Grim, Rachelle	\$50		X		
12399	FYEX	1113	1N0	5	Academic Literacy		ONLINE	Johnson, Janett	\$50			X	

## Health Care Assistant

CRN	SUBJ	NUM	SEC	HRS	TITLE	DAYS	TIME	INSTRUCTOR	FEES	COURSE MODE OPTIONS			
										ON CAMPUS	LIVE ONLINE	ONLINE	HYBRID
10218	HCA	101	1B0	6	Health Care Assistant	MW	1:00 pm - 3:30 pm	Soto, Elena	\$65				X
12015	HCA	101	1B1	6	Health Care Assistant	TR	1:00 pm - 3:30 pm	West, Toni	\$65				X

## Health Education (HPE Academic Courses)

CRN	SUBJ	NUM	SEC	HRS	TITLE	DAYS	TIME	INSTRUCTOR	FEES	COURSE MODE OPTIONS			
										ON CAMPUS	LIVE ONLINE	ONLINE	HYBRID
12213	HLED	1120	1B0	2	Am Red Cross First Aid CPR/AED		ONLINE	Burns, Karen	\$50				X
<i>The instructional material of this class will be delivered through an online format. Students will be required to attend one of the two on-campus, hands-on sessions that meet either Tuesday, March 8 from 5:45 p.m.-9:00 p.m. or Thursday, March 10 from 5:45 p.m.-9:00 p.m.</i>													
12210	HLED	1130	1N0	3	Concepts of Health & Wellness		ONLINE	Heath, Bradley	\$50			X	
12214	HLED	1150	1E0	2	Lifeguarding			TBD	\$58				
					4/15	F	5:30pm - 8:00pm						
					4/16	S	8:30am - 5:00pm						
					4/22	F	5:30pm - 8:00pm						
					4/23	S	8:30am - 5:00pm						
<i>The HLED 1150 class is held for only the four days indicated above. Students should bring the Lifeguarding book to the first class. This book can be purchased at the CCC Bookstore. (300m pretest swim required.)</i>													
12238	HLED	1170	1N0	2	Fitness Concepts Special Popul		ONLINE	TBD	\$50			X	
12211	HLED	1220	1N0	2	Personal Health Management		ONLINE	Heath, Bradley	\$50			X	
12212	HLED	2110	1N0	2	Principles of Coaching		ONLINE	TBD	\$50			X	

## History

CRN	SUBJ	NUM	SEC	HRS	TITLE	DAYS	TIME	INSTRUCTOR	FEES	COURSE MODE OPTIONS			
										ON CAMPUS	LIVE ONLINE	ONLINE	HYBRID
12016	HIST	1110	101	3	United States History I	MW	12:00 pm - 1:15 pm	Powers, Michael		X			
12017	HIST	1110	1L0	3	United States History I	W	6:00 pm - 8:30 pm	Bridinger De Leon, Vicki	\$50		X		
12018	HIST	1110	1N0	3	United States History I		ONLINE	Powers, Michael	\$50			X	
12019	HIST	1120	101	3	United States History II	MW	9:00 am - 10:15 am	Anderson, Aaron		X			
12020	HIST	1120	102	3	United States History II	TR	12:15 pm - 1:30 pm	Powers, Michael		X			
12021	HIST	1120	1N0	3	United States History II		ONLINE	Powers, Michael	\$50			X	
12032	HIST	1130	1N0	3	World History I		ONLINE	Anderson, Aaron	\$50			X	
12034	HIST	1140	1N0	3	World History II		ONLINE	Anderson, Aaron	\$50			X	
12045	HIST	2110	1N0	3	Survey of New Mexico History		ONLINE	Anderson, Aaron	\$50			X	
12405	HIST	2110	1Z0	3	Survey of New Mexico History	MW	1:30 pm - 2:45 pm	Bridinger De Leon, Vicki	\$25	X	X	X	
12047	HIST	2145	1N0	3	American Military History		ONLINE	Anderson, Aaron	\$50			X	

## Humanities

CRN	SUBJ	NUM	SEC	HRS	TITLE	DAYS	TIME	INSTRUCTOR	FEES	COURSE MODE OPTIONS			
										ON CAMPUS	LIVE ONLINE	ONLINE	HYBRID
12048	HUMN	1110	1N0	3	Intro to World Humanities I		ONLINE	Henry, Robin	\$50			X	
12049	HUMN	2110	1N0	3	Intro to World Humanities II		ONLINE	Henry, Robin	\$50			X	

## Industrial Technology

The Industrial Technology program offers concentrations in Plant Operations & Equipment and Wind Energy. The program runs Monday - Friday from 8 a.m. to 12 p.m. To apply students should call 575.769.4945 or stop by Room 403. Students will need to fill out an OT application and meet the Accuplacer score requirements prior to being accepted into the program. Applications are now being accepted for Spring 2022.

## Legal Studies (Paralegal)

CRN	SUBJ	NUM	SEC	HRS	TITLE	DAYS	TIME	INSTRUCTOR	FEES	COURSE MODE OPTIONS			
										ON CAMPUS	LIVE ONLINE	ONLINE	HYBRID
10312	LEST	104	1N0	3	Torts, Practice and Procedure		ONLINE	Reeb, Andrea	\$50			X	
10802	LEST	123	1N0	3	Litigation		ONLINE	Talbert, Laura	\$50			X	
10803	LEST	221	1N0	3	Wills and Estates		ONLINE	Rowley, Richard	\$50			X	
10841	LEST	227	1N0	3	Law Office Prac / Proced		ONLINE	Rowley, Richard	\$50			X	
12406	LEST	228	1N0	3	Corporate Law		ONLINE	Talbert, Laura	\$50			X	

## Management

CRN	SUBJ	NUM	SEC	HRS	TITLE	DAYS	TIME	INSTRUCTOR	FEES	COURSE MODE OPTIONS			
										ON CAMPUS	LIVE ONLINE	ONLINE	HYBRID
12050	MGMT	2110	1N0	3	Principles of Management		ONLINE	Reed, Melissa	\$50			X	

## Marketing

CRN	SUBJ	NUM	SEC	HRS	TITLE	DAYS	TIME	INSTRUCTOR	FEES	COURSE MODE OPTIONS			
										ON CAMPUS	LIVE ONLINE	ONLINE	HYBRID
12051	MKTG	2110	1Z0	3	Principles of Marketing	MW	10:30 am - 11:45 am	Reed, Melissa		X	X	X	

## Mathematics

CRN	SUBJ	NUM	SEC	HRS	TITLE	DAYS	TIME	INSTRUCTOR	FEES	COURSE MODE OPTIONS			
										ON CAMPUS	LIVE ONLINE	ONLINE	HYBRID
12068	MATH	1130	101	3	Survey of Mathematics	T	6:00 pm - 8:30 pm	McCune, Sarah		X			
12069	MATH	1130	102	3	Survey of Mathematics	MW	10:00 am - 11:15 am	Faucett, Jessica		X			
12070	MATH	1130	103	3	Survey of Mathematics	MW	12:00 pm - 1:15 pm	Faucett, Jessica		X			
12071	MATH	1130	1N0	3	Survey of Mathematics		ONLINE	Faucett, Jessica	\$50			X	
12056	MATH	1215	1N0	4	Intermediate Algebra		ONLINE	Finney, Brandon	\$50			X	
12240	MATH	1220	101	3	College Algebra	R	6:00 pm - 8:30 pm	McCune, Sarah		X			
12057	MATH	1220	102	3	College Algebra	MW	12:00 pm - 1:15 pm	Finney, Brandon		X			
12059	MATH	1220	1N0	3	College Algebra		ONLINE	Finney, Brandon	\$50			X	
12317	MATH	1230	1N0	3	Trigonometry		ONLINE	Faucett, Jessica	\$50			X	
12127	MATH	1350	1N0	4	Introduction to Statistics		ONLINE	Faucett, Jessica	\$50			X	
12429	MATH	1512	1N0	4	Calculus I		ONLINE	Finney, Brandon	\$50			X	
12410	MATH	1522	101	4	Calculus II	TR	12:00 pm - 1:40 pm	Finney, Brandon		X			

## Music

CRN	SUBJ	NUM	SEC	HRS	TITLE	DAYS	TIME	INSTRUCTOR	FEES	COURSE MODE OPTIONS			
										ON CAMPUS	LIVE ONLINE	ONLINE	HYBRID
<b>12073</b>	MUSC	1130	1N0	3	Music Appreciation: Western		ONLINE	Sena, Sarah	\$50			X	
<b>12072</b>	MUSC	1220	101	2	Fund of Piano for Non-Majors	W	6:00 pm - 7:40 pm	TBD		X			

## Nail Tech/Esthetics

The Nail Tech/Esthetics program is a combined program that runs Monday-Thursday from 8 a.m. to 5 p.m. To apply students should call 575.769.4945 or stop by Room 403. Students will need to fill out a Cosmetology application, submit high school transcripts to the Office of Admissions, and meet the Accuplacer score requirements prior to being accepted into the program. Applications are now being accepted for Fall 2022.

## Nursing

CRN	SUBJ	NUM	SEC	HRS	TITLE	DAYS	TIME	INSTRUCTOR	FEES	COURSE MODE OPTIONS			
										ON CAMPUS	LIVE ONLINE	ONLINE	HYBRID
<b>12143</b>	NSG	105	1N0	3	Medical Terminology		ONLINE	West, Toni	\$50			X	
<b>12144</b>	NSG	128	1N0	4	Pathophysiology		ONLINE	Jones, Robin	\$50			X	
<b>12440</b>	NSG	150	1N0	3	Healthcare Ethics		ONLINE	McGill, Shawna	\$50			X	

The Nursing Program runs Monday-Thursday with exams usually given on Fridays. The application is available at [clovis.edu/nursing](http://clovis.edu/nursing) and should be submitted along with transcripts to the Office of Admissions. Deadlines to submit applications are July 1 for Fall and October 1 for Spring.

## Nutrition

CRN	SUBJ	NUM	SEC	HRS	TITLE	DAYS	TIME	INSTRUCTOR	FEES	COURSE MODE OPTIONS			
										ON CAMPUS	LIVE ONLINE	ONLINE	HYBRID
<b>12218</b>	NUTR	2110	1N0	3	Human Nutrition		ONLINE	TBD	\$50			X	

## Occupational Technology

CRN	SUBJ	NUM	SEC	HRS	TITLE	DAYS	TIME	INSTRUCTOR	FEES	COURSE MODE OPTIONS			
										ON CAMPUS	LIVE ONLINE	ONLINE	HYBRID
<b>10363</b>	OT	122	101	2	Woodworking I	M	6:45 pm - 9:15 pm	Oborny, Francis		X			
<b>10367</b>	OT	123	101	2	Woodworking II	M	6:45 pm - 9:15 pm	Oborny, Francis		X			
<b>11051</b>	OT	124	101	2	Cabinet Making I	W	6:45 pm - 9:15 pm	Oborny, Francis		X			
<b>11052</b>	OT	125	101	2	Cabinet Making II	W	6:45 pm - 9:15 pm	Oborny, Francis		X			

## Philosophy

CRN	SUBJ	NUM	SEC	HRS	TITLE	DAYS	TIME	INSTRUCTOR	FEES	COURSE MODE OPTIONS			
										ON CAMPUS	LIVE ONLINE	ONLINE	HYBRID
<b>12074</b>	PHIL	1120	1N0	3	Logic, Reason & Critl Thinking		ONLINE	Rush, Rajka	\$50			X	
<b>12076</b>	PHIL	2110	1N0	3	Introduction to Ethics		ONLINE	Rush, Rajka	\$50			X	
<b>12075</b>	PHIL	2230	1N0	3	Philosophical Thought		ONLINE	Rush, Rajka	\$50			X	

## Phlebotomy

CRN	SUBJ	NUM	SEC	HRS	TITLE	DAYS	TIME	INSTRUCTOR	FEES	COURSE MODE OPTIONS			
										ON CAMPUS	LIVE ONLINE	ONLINE	HYBRID
11784	PHLB	102	1V0	3	Intro to Medical Lab Theory	MW	08:00 am-10:30 am	Kinley, Amanda		x			
11713	PHLB	102	1V1	3	Intro to Medical Lab Theory	TR	08:00 am-10:30 am	Kinley, Amanda		x			
11785	PHLB	103	1V0	3	Phlebotomy Theory	MW	08:00 am-10:30 am	Kinley, Amanda	\$90	x			
11714	PHLB	103	1V1	3	Phlebotomy Theory	TR	08:00 am-10:30 am	Kinley, Amanda	\$90	x			
11786	PHLB	103L	1V0	2	Phlebotomy Lab	MW	10:30 am-12:30 pm	Kinley, Amanda		x			
11715	PHLB	103L	1V1	2	Phlebotomy Lab	TR	10:30 am-12:30 pm	Kinley, Amanda		x			
11787	PHLB	104	1V0	2	Clinical Phlebotomy	MW	01:30 pm-03:30 pm	Kinley, Amanda	\$60	x			
11716	PHLB	104	1V1	2	Clinical Phlebotomy	TR	01:30 pm-03:30 pm	Kinley, Amanda	\$60	x			

Students are required to register concurrently for all four of the Phlebotomy courses listed above.

## Physical Education (HPE Activity Courses)

CRN	SUBJ	NUM	SEC	HRS	TITLE	DAYS	TIME	INSTRUCTOR	FEES	COURSE MODE OPTIONS			
										ON CAMPUS	LIVE ONLINE	ONLINE	HYBRID
12231	PHED	1110	101	1	Dance: Beginning Belly Dancing	M	6:00 pm - 7:40 pm	Chavez, Yolanda		x			
12192	PHED	1110	102	1	Dance: Beginning Belly Dancing	W	7:00 pm - 8:40 pm	Chavez, Yolanda		x			
12193	PHED	1110	103	1	Dance: Ballroom	T	6:15 pm - 7:55 pm	Boney, Debbie		x			
12195	PHED	1140	101	1	Zumba	MW	9:00 am - 9:50 am	Mulhair, Amanda		x			
12441	PHED	1210	101	1	Basketball	M	6:00 pm - 7:40 pm	TBD		x			
12162	PHED	1320	101	1	Aqua Fit: Senior Aquatics	TR	3:00 pm - 3:50 pm	Williamson, Christine	\$20	x			
12163	PHED	1320	102	1	Aqua Fit: Water Aerobics	MW	8:00 am - 8:50 am	Albin, Jeannette	\$20	x			
12164	PHED	1320	103	1	Aqua Fit: Water Aerobics	MW	9:00 am - 9:50 am	Albin, Jeannette	\$20	x			
12165	PHED	1320	104	1	Aqua Fit: Water Aerobics	MW	4:00 pm - 4:50 pm	Albin, Jeannette	\$20	x			
12167	PHED	1320	105	1	Aqua Fit: Water Aerobics	TR	8:00 am - 8:50 am	Arnett, Emily	\$20	x			
12412	PHED	1320	106	1	Aqua Fit: Water Aerobics	TR	4:00 pm - 4:50 pm	Arnett, Emily	\$20	x			
12168	PHED	1320	107	1	Aqua Fit: Water Aerobics	TR	5:00 pm - 5:50 pm	Williamson, Christine	\$20	x			
12232	PHED	1410	101	1	Yoga: Beginning Yoga	M	4:00 pm - 5:40 pm	Chavez, Yolanda		x			
12169	PHED	1410	102	1	Yoga: Beginning Yoga	T	2:30 pm - 4:10 pm	Golder, Terri		x			
12170	PHED	1410	103	1	Yoga: Beginning Yoga	W	2:30 pm - 4:10 pm	Chavez, Yolanda		x			
12173	PHED	1410	104	1	Yoga: Beginning Yoga	TR	6:10 am - 7:00 am	Golder, Terri		x			
12174	PHED	1430	101	1	Pilates	MW	8:00 am - 8:50 am	Williamson, Christine		x			
12185	PHED	1510	101	1	Training: Body Sculpting	MW	1:00 pm - 1:50 pm	Williamson, Christine		x			
<i>This section is recommended for senior citizens.</i>													
12186	PHED	1510	102	1	Training: Body Sculpting	MW	5:00 pm - 5:50 pm	TBD		x			
12187	PHED	1510	103	1	Training: Body Sculpting	TR	8:00 am - 8:50 am	Williamson, Christine		x			
12197	PHED	1510	104	1	Training: Beg. Weight Training	MW	4:00 pm - 4:50 pm	TBD		x			
12198	PHED	1510	105	1	Training: Beg. Weight Training	TR	12:00 pm - 12:50 pm	Heath, Bradley		x			
12200	PHED	1510	106	1	Training: Circuit Training	TR	9:00 am - 9:50 am	Arnett, Emily		x			
12201	PHED	1510	107	1	Training: Circuit Training	TR	5:00 pm - 5:50 pm	Doolittle, Stephen		x			
12413	PHED	1510	108	1	Training: Kickboxing	TR	6:00 pm - 6:50 pm	Watson, Michael		x			
12188	PHED	1610	101	1	Fitness for Life		TBA	Heath, Bradley		x			
12176	PHED	1620	101	1	Fitness: Indoor Cycling	MW	6:10 am - 7:00 am	O'Rear, Tammi		x			
12177	PHED	1620	102	1	Fitness: Indoor Cycling	MW	4:00 pm - 4:50 pm	TBD		x			
12179	PHED	1620	103	1	Fitness: Indoor Cycling	TR	6:10 am - 7:00 am	O'Rear, Tammi		x			
12183	PHED	1620	104	1	Fitness: Core Fitness I	MW	12:00 pm - 12:50 pm	Williamson, Christine		x			
12194	PHED	1670	101	1	Aerobics: Beg. Step Aerobics	TR	4:00 pm - 4:50 pm	TBD		x			
12175	PHED	1710	101	1	Martial Arts: Self-Defense	R	7:00 pm - 8:40 pm	Watson, Michael		x			

## Physical Education (HPE Activity Courses) *Continued*

CRN	SUBJ	NUM	SEC	HRS	TITLE	DAYS	TIME	INSTRUCTOR	FEES	COURSE MODE OPTIONS			
										ON CAMPUS	LIVE ONLINE	ONLINE	HYBRID
12205	PHED	2230	101	1	Ind Sprt II: Intrm Racquetball	MW	5:30 pm - 6:20 pm	Smith, Marcus		x			
12234	PHED	2996	101	1	Topics in PE: Mindful/Meditatn	W	5:00 pm - 6:40 pm	Chavez, Yolanda		x			
12206	PHED	2996	102	1	Topics in PE: Boot Camp	MW	6:10 am - 7:00 am	Arnett, Emily		x			
12207	PHED	2996	103	1	Topics in PE: Boot Camp	TR	5:00 pm - 5:50 pm	Arnett, Emily		x			
12233	PHED	2996	104	1	Topics in PE: Tai Chi	TF	1:00 pm - 1:50 pm	McConnell, Heather		x			

## Physical Therapist Assistant

The Physical Therapist Assistant Program runs Tuesday-Friday. The application is available at [clovis.edu/pta](http://clovis.edu/pta) and should be submitted along with transcripts and observation hours log to the Office of Admissions. The deadline to submit applications is July 1.

## Physics

CRN	SUBJ	NUM	SEC	HRS	TITLE	DAYS	TIME	INSTRUCTOR	FEES	COURSE MODE OPTIONS			
										ON CAMPUS	LIVE ONLINE	ONLINE	HYBRID
12077	PHYS	1115C	101	4	Survey of Physics with Lab	MW	3:00 pm - 5:30 pm	Scroggins, Donald		x			

## Political Science

CRN	SUBJ	NUM	SEC	HRS	TITLE	DAYS	TIME	INSTRUCTOR	FEES	COURSE MODE OPTIONS			
										ON CAMPUS	LIVE ONLINE	ONLINE	HYBRID
12081	POLS	1120	1N0	3	American National Government		ONLINE	Rapp, Gregory	\$50			x	

## Psychology

CRN	SUBJ	NUM	SEC	HRS	TITLE	DAYS	TIME	INSTRUCTOR	FEES	COURSE MODE OPTIONS			
										ON CAMPUS	LIVE ONLINE	ONLINE	HYBRID
12082	PSYC	1110	101	3	Introduction to Psychology	M	6:45 pm - 9:15 pm	Smith, Marcus		x			
12084	PSYC	1110	102	3	Introduction to Psychology	MW	1:30 pm - 2:45 pm	Thomas, Angela-Faith		x			
12085	PSYC	1110	103	3	Introduction to Psychology	TR	10:30 am - 11:45 am	Thomas, Angela-Faith		x			
12086	PSYC	1110	104	3	Introduction to Psychology	TR	1:30 pm - 2:45 pm	Thomas, Angela-Faith		x			
12083	PSYC	1110	1L0	3	Introduction to Psychology	W	6:00 pm - 8:30 pm	Piepkorn, Jennie	\$50		x		
12087	PSYC	1110	1N0	3	Introduction to Psychology		ONLINE	Piepkorn, Jennie	\$50				x
12090	PSYC	2120	101	3	Developmental Psychology	T	6:00 pm - 8:30 pm	Sena, Mindy		x			
12091	PSYC	2120	102	3	Developmental Psychology	MW	12:00 pm - 1:15 pm	Thomas, Angela-Faith		x			
12093	PSYC	2120	1N0	3	Developmental Psychology		ONLINE	Sena, Mindy	\$50				x
12097	PSYC	2130	1N0	3	Adolescent Psychology		ONLINE	Christian, Hayley	\$50				x
12095	PSYC	2140	101	3	Child Psychology	MW	10:30 am - 11:45 am	Thomas, Angela-Faith		x			
12096	PSYC	2140	1N0	3	Child Psychology		ONLINE	Piepkorn, Jennie	\$50				x
12418	PSYC	2330	1Z0	3	Psychology of Human Sexuality	R	6:45 pm - 9:15 pm	Smith, Marcus	\$25	x	x	x	
12419	PSYC	2445	1N0	3	Parenting Skills		ONLINE	Grussendorf, Erika	\$50				x

## Radiologic Technology

The Radiology Program runs Monday-Thursday. The application is available at [clovis.edu/radt](http://clovis.edu/radt) and should be submitted along with transcripts to the Office of Admissions. The deadline to submit applications is July 1.

## Religion

CRN	SUBJ	NUM	SEC	HRS	TITLE	DAYS	TIME	INSTRUCTOR	FEES	COURSE MODE OPTIONS			
										ON CAMPUS	LIVE ONLINE	ONLINE	HYBRID
12100	RELG	1110	1N0	3	Intro to World Religions		ONLINE	Bush, David	\$50			X	
12099	RELG	1126	1N0	3	New Testament		ONLINE	Bush, David	\$50			X	
12101	RELG	1510	1N0	3	Life of Christ		ONLINE	Kirby, Richard	\$50			X	
12102	RELG	2220	1N0	3	Women of the Bible		ONLINE	Kirby, Richard	\$50			X	

## Sign (American Sign Language)

CRN	SUBJ	NUM	SEC	HRS	TITLE	DAYS	TIME	INSTRUCTOR	FEES	COURSE MODE OPTIONS			
										ON CAMPUS	LIVE ONLINE	ONLINE	HYBRID
12106	SIGN	1110	101	3	American Sign Language I	M	6:00 pm - 8:30 pm	Gray, Akiko		X			

## Sociology

CRN	SUBJ	NUM	SEC	HRS	TITLE	DAYS	TIME	INSTRUCTOR	FEES	COURSE MODE OPTIONS			
										ON CAMPUS	LIVE ONLINE	ONLINE	HYBRID
12107	SOCI	1110	101	3	Introduction to Sociology	TR	10:30 am - 11:45 am	Richeson, J		X			
12108	SOCI	1110	1N0	3	Introduction to Sociology		ONLINE	Richeson, J	\$50			X	
12120	SOCI	2240	1N0	3	Soc Intimate Relations/Family		ONLINE	Richeson, J	\$50			X	

## Spanish

CRN	SUBJ	NUM	SEC	HRS	TITLE	DAYS	TIME	INSTRUCTOR	FEES	COURSE MODE OPTIONS			
										ON CAMPUS	LIVE ONLINE	ONLINE	HYBRID
12121	SPAN	1110	1L0	4	Spanish I	T	6:00 pm - 9:15 pm	Guillen, Teresa	\$50		X		
12122	SPAN	1110	1N0	4	Spanish I		ONLINE	Guillen, Teresa	\$50			X	
12123	SPAN	1120	1L0	4	Spanish II	M	6:00 pm - 9:15 pm	Guillen, Teresa	\$50		X		
12124	SPAN	1120	1N0	4	Spanish II		ONLINE	Guillen, Teresa	\$50			X	

## Transitional Studies

CRN	SUBJ	NUM	SEC	HRS	TITLE	DAYS	TIME	INSTRUCTOR	FEES	COURSE MODE OPTIONS			
										ON CAMPUS	LIVE ONLINE	ONLINE	HYBRID
11696	TRST	0930	101	4	Basic Algebra I	T	6:00 pm - 9:15 pm	Leatherwood, Shane		X			
11735	TRST	0931	101	4	Basic Algebra II	T	6:00 pm - 9:15 pm	Conn, Drena		X			
11792	TRST	0931	1N0	4	Basic Algebra II		ONLINE	Leatherwood, Shane	\$50			X	

## Welding

CRN	SUBJ	NUM	SEC	HRS	TITLE	DAYS	TIME	INSTRUCTOR	FEES	COURSE MODE OPTIONS			
										ON CAMPUS	LIVE ONLINE	ONLINE	HYBRID
11486	WELD	272	101	3	Gen Welding for the Hobbyist	M	5:30 pm - 8:30 pm	Poindexter, Sean	\$330	X			

Other than the hobbyist class listed above, the full-time Welding program runs Monday Thursday from 7 a.m. to 12 p.m. To apply students should call 575.769.4945 or stop by Room 403. Students will need to complete an OT application, and meet the Accuplacer score requirements prior to being accepted into the program. Applications are now being accepted for Spring 2022.

**Art History**

CRN	SUBJ	NUM	SEC	HRS	TITLE	DAYS	TIME	INSTRUCTOR	FEES	COURSE MODE OPTIONS			
										ON CAMPUS	LIVE ONLINE	ONLINE	HYBRID
12372	ARTH	1110	1N4	3	Art Appreciation		ONLINE	Anderson, Marsha	\$50			X	

**Biology**

CRN	SUBJ	NUM	SEC	HRS	TITLE	DAYS	TIME	INSTRUCTOR	FEES	COURSE MODE OPTIONS			
										ON CAMPUS	LIVE ONLINE	ONLINE	HYBRID
12335	BIOL	2210C	1N4	4	Human Anat/Phys I Lec/Lab		ONLINE	Kuykendall, Todd	\$50			X	

**Business and Office Technology**

CRN	SUBJ	NUM	SEC	HRS	TITLE	DAYS	TIME	INSTRUCTOR	FEES	COURSE MODE OPTIONS			
										ON CAMPUS	LIVE ONLINE	ONLINE	HYBRID
11282	BOFT	101	1N4	1	Personal Keyboarding		ONLINE	Ewers, Dannette	\$50			X	

**Chemistry**

CRN	SUBJ	NUM	SEC	HRS	TITLE	DAYS	TIME	INSTRUCTOR	FEES	COURSE MODE OPTIONS			
										ON CAMPUS	LIVE ONLINE	ONLINE	HYBRID
11914	CHEM	1120C	1N4	4	Intro to Chem Lec/Lab Non-Maj		ONLINE	Jones, Krista	\$50			X	

**Communication**

CRN	SUBJ	NUM	SEC	HRS	TITLE	DAYS	TIME	INSTRUCTOR	FEES	COURSE MODE OPTIONS				
										ON CAMPUS	LIVE ONLINE	ONLINE	HYBRID	
12384	COMM	1130	170	3	Public Speaking	MW	4:30 pm - 7:00 pm	Chavez, Simon				X		
<i>This class meets at CAFB.</i>														
12386	COMM	1130	1N4	3	Public Speaking		ONLINE	Chavez, Simon	\$50			X		
12227	COMM	2120	1N4	3	Interpersonal Communication		ONLINE	Chavez, Simon	\$50			X		

**Computer Information Systems**

CRN	SUBJ	NUM	SEC	HRS	TITLE	DAYS	TIME	INSTRUCTOR	FEES	COURSE MODE OPTIONS				
										ON CAMPUS	LIVE ONLINE	ONLINE	HYBRID	
11119	CIS	106	1N4	1	Windows Fundamentals		ONLINE	Burningham, John	\$50			X		
<i>CIS 106 will be taught using Windows 10.</i>														

**Early Childhood Education**

CRN	SUBJ	NUM	SEC	HRS	TITLE	DAYS	TIME	INSTRUCTOR	FEES	COURSE MODE OPTIONS			
										ON CAMPUS	LIVE ONLINE	ONLINE	HYBRID
11942	ECED	1110	1N4	3	Child Growth, Dev & Learning		ONLINE	Flygare, Michelle	\$50			X	



## Economics

CRN	SUBJ	NUM	SEC	HRS	TITLE	DAYS	TIME	INSTRUCTOR	FEES	COURSE MODE OPTIONS			
										ON CAMPUS	LIVE ONLINE	ONLINE	HYBRID
12346	ECON	2110	1N4	3	Macroeconomic Principles		ONLINE	Kuykendall, Robin	\$50			X	

## English

CRN	SUBJ	NUM	SEC	HRS	TITLE	DAYS	TIME	INSTRUCTOR	FEES	COURSE MODE OPTIONS			
										ON CAMPUS	LIVE ONLINE	ONLINE	HYBRID
12337	ENGL	1110	1N4	3	Composition I		ONLINE	Nagy, Paul	\$50			X	
12394	ENGL	1120	1N4	3	Composition II		ONLINE	D'Amour, Linda	\$50			X	

## Film & Digital Media Art

CRN	SUBJ	NUM	SEC	HRS	TITLE	DAYS	TIME	INSTRUCTOR	FEES	COURSE MODE OPTIONS			
										ON CAMPUS	LIVE ONLINE	ONLINE	HYBRID
12397	FDMA	2713	1Z4	3	Computer 2D Animation	MW	3:00 pm - 4:15 pm	Hurlebusch, Judith		X	X	X	

## First Year Experience

CRN	SUBJ	NUM	SEC	HRS	TITLE	DAYS	TIME	INSTRUCTOR	FEES	COURSE MODE OPTIONS			
										ON CAMPUS	LIVE ONLINE	ONLINE	HYBRID
11999	FYEX	1110	1M4	3	First Year Seminar	MW	6:00 pm - 8:30 pm	TBD	\$50		X		
12323	FYEX	1110	1N4	3	First Year Seminar		ONLINE	Chetty, Nicole	\$50			X	
12400	FYEX	1113	1N4	5	Academic Literacy		ONLINE	Thomas, Erin	\$50			X	

## History

CRN	SUBJ	NUM	SEC	HRS	TITLE	DAYS	TIME	INSTRUCTOR	FEES	COURSE MODE OPTIONS			
										ON CAMPUS	LIVE ONLINE	ONLINE	HYBRID
12403	HIST	1110	1N4	3	United States History I		ONLINE	Anderson, Aaron	\$50			X	
12404	HIST	1150	1N4	3	Western Civilization I		ONLINE	Anderson, Aaron	\$50			X	

## Occupational Technology

CRN	SUBJ	NUM	SEC	HRS	TITLE	DAYS	TIME	INSTRUCTOR	FEES	COURSE MODE OPTIONS			
										ON CAMPUS	LIVE ONLINE	ONLINE	HYBRID
10365	OT	122	130	2	Woodworking I	TR	6:45 pm - 9:15 pm	Oborny, Robert		X			
10369	OT	123	130	2	Woodworking II	TR	6:45 pm - 9:15 pm	Oborny, Robert		X			

## Physical Education (HPE Activity Courses)

CRN	SUBJ	NUM	SEC	HRS	TITLE	DAYS	TIME	INSTRUCTOR	FEES	COURSE MODE OPTIONS			
										ON CAMPUS	LIVE ONLINE	ONLINE	HYBRID
12180	PHED	1620	130	1	Fitness: Indoor Cycling	TR	9:00 am - 10:40 am	Heath, Bradley		X			
12202	PHED	2510	130	1	Training II: Cross Training	TR	6:30 pm - 8:10 pm	O'Rear, Tammi		X			

## Political Science

CRN	SUBJ	NUM	SEC	HRS	TITLE	DAYS	TIME	INSTRUCTOR	FEES	COURSE MODE OPTIONS			
										ON CAMPUS	LIVE ONLINE	ONLINE	HYBRID
12416	POLS	1120	1N4	3	American National Government		ONLINE	Rapp, Gregory	\$50			X	

## Psychology

CRN	SUBJ	NUM	SEC	HRS	TITLE	DAYS	TIME	INSTRUCTOR	FEES	COURSE MODE OPTIONS			
										ON CAMPUS	LIVE ONLINE	ONLINE	HYBRID
12088	PSYC	1110	1N4	3	Introduction to Psychology		ONLINE	Grussendorf, Erika	\$50			X	

## Transitional Studies

CRN	SUBJ	NUM	SEC	HRS	TITLE	DAYS	TIME	INSTRUCTOR	FEES	COURSE MODE OPTIONS			
										ON CAMPUS	LIVE ONLINE	ONLINE	HYBRID
11685	TRST	0910	130	3	Basic Writing Skills I	MW	6:00 pm - 8:30 pm	TBD		X			
11691	TRST	0920	130	3	Basic Reading Skills I	TR	6:00 pm - 8:30 pm	TBD		X			
11698	TRST	0930	130	4	Basic Algebra I	MTWR	12:00 pm - 1:40 pm	Conn, Drena		X			
11699	TRST	0930	1N4	4	Basic Algebra I		ONLINE	Pharies, Donna	\$50				X
12445	TRST	0931	1N4	4	Basic Algebra II		ONLINE	Powell, Larry	\$50				X

## Second 8-Weeks

March 14 - May 13

## Biology

CRN	SUBJ	NUM	SEC	HRS	TITLE	DAYS	TIME	INSTRUCTOR	FEES	COURSE MODE OPTIONS			
										ON CAMPUS	LIVE ONLINE	ONLINE	HYBRID
12336	BIOL	2225C	1N7	4	Human Anat/Phys II Lec/Lab		ONLINE	Kuykendall, Todd	\$50			X	

## Business Administration

CRN	SUBJ	NUM	SEC	HRS	TITLE	DAYS	TIME	INSTRUCTOR	FEES	COURSE MODE OPTIONS			
										ON CAMPUS	LIVE ONLINE	ONLINE	HYBRID
12368	BUSA	1110	1N7	3	Introduction to Business		ONLINE	TBD	\$50			X	

## Business Computer Information Systems

CRN	SUBJ	NUM	SEC	HRS	TITLE	DAYS	TIME	INSTRUCTOR	FEES	COURSE MODE OPTIONS			
										ON CAMPUS	LIVE ONLINE	ONLINE	HYBRID
12370	BCIS	1110	1N7	3	Fund of Info Literacy/Systems		ONLINE	TBD	\$50			X	

*BCIS 1110 covers the Microsoft Office 2019/Office 365 Windows versions of Word, Excel, Access, and PowerPoint.*

## Business and Office Technology

CRN	SUBJ	NUM	SEC	HRS	TITLE	DAYS	TIME	INSTRUCTOR	FEES	COURSE MODE OPTIONS			
										ON CAMPUS	LIVE ONLINE	ONLINE	HYBRID
11283	BOFT	101	1N7	1	Personal Keyboarding		ONLINE	Ewers, Dannette	\$50			X	
10990	BOFT	102	1N7	1	Computerized 10-Key Operations		ONLINE	Ewers, Dannette	\$50			X	
12299	BOFT	115	1N7	3	Workplace and Life Essentials		ONLINE	Turner, Monica	\$50			X	

## Chemistry

CRN	SUBJ	NUM	SEC	HRS	TITLE	DAYS	TIME	INSTRUCTOR	FEES	COURSE MODE OPTIONS			
										ON CAMPUS	LIVE ONLINE	ONLINE	HYBRID
<a href="#">12262</a>	CHEM	1120C	1N7	4	Intro to Chem Lec/Lab Non-Maj		ONLINE	Jones, Krista	\$50			X	

## Communication

CRN	SUBJ	NUM	SEC	HRS	TITLE	DAYS	TIME	INSTRUCTOR	FEES	COURSE MODE OPTIONS			
										ON CAMPUS	LIVE ONLINE	ONLINE	HYBRID
<a href="#">12385</a>	COMM	1130	175	3	Public Speaking	MW	4:30 pm - 7:00 pm	Chavez, Simon		X			
<i>This class meets at CAFB.</i>													

## Computer Information Systems

CRN	SUBJ	NUM	SEC	HRS	TITLE	DAYS	TIME	INSTRUCTOR	FEES	COURSE MODE OPTIONS			
										ON CAMPUS	LIVE ONLINE	ONLINE	HYBRID
<a href="#">11041</a>	CIS	107	1N7	1	Internet Fundamentals		ONLINE	Burningham, John	\$50			X	
<i>CIS 107 will be taught using Windows 10.</i>													

## Early Childhood Education

CRN	SUBJ	NUM	SEC	HRS	TITLE	DAYS	TIME	INSTRUCTOR	FEES	COURSE MODE OPTIONS			
										ON CAMPUS	LIVE ONLINE	ONLINE	HYBRID
<a href="#">11948</a>	ECED	1130	1N7	3	Family & Comm Collaboration		ONLINE	Flygare, Michelle	\$50			X	

## Economics

CRN	SUBJ	NUM	SEC	HRS	TITLE	DAYS	TIME	INSTRUCTOR	FEES	COURSE MODE OPTIONS			
										ON CAMPUS	LIVE ONLINE	ONLINE	HYBRID
<a href="#">12392</a>	ECON	2120	1N7	3	Microeconomic Principles		ONLINE	Kuykendall, Robin	\$50			X	

## English

CRN	SUBJ	NUM	SEC	HRS	TITLE	DAYS	TIME	INSTRUCTOR	FEES	COURSE MODE OPTIONS			
										ON CAMPUS	LIVE ONLINE	ONLINE	HYBRID
<a href="#">12356</a>	ENGL	1110	1N7	3	Composition I		ONLINE	Nagy, Paul	\$50			X	
<a href="#">12338</a>	ENGL	1120	1N7	3	Composition II		ONLINE	Johnson, Janett	\$50			X	
<a href="#">12288</a>	ENGL	1410	1N7	3	Introduction to Literature		ONLINE	Nagy, Paul	\$50			X	

## Film & Digital Media Art

CRN	SUBJ	NUM	SEC	HRS	TITLE	DAYS	TIME	INSTRUCTOR	FEES	COURSE MODE OPTIONS			
										ON CAMPUS	LIVE ONLINE	ONLINE	HYBRID
<a href="#">12222</a>	FDMA	2790	1N7	3	Game Design Concepts		ONLINE	Davis, Terry	\$50			X	

## First Year Experience

CRN	SUBJ	NUM	SEC	HRS	TITLE	DAYS	TIME	INSTRUCTOR	FEES	COURSE MODE OPTIONS			
										ON CAMPUS	LIVE ONLINE	ONLINE	HYBRID
12001	FYEX	1110	1M7	3	First Year Seminar	MW	6:00 pm - 8:30 pm	TBD	\$50		x		
12010	FYEX	1110	1N7	3	First Year Seminar		ONLINE	Chetty, Nicole	\$50			x	
12401	FYEX	1113	1N7	5	Academic Literacy		ONLINE	Thomas, Erin	\$50			x	

## History

CRN	SUBJ	NUM	SEC	HRS	TITLE	DAYS	TIME	INSTRUCTOR	FEES	COURSE MODE OPTIONS			
										ON CAMPUS	LIVE ONLINE	ONLINE	HYBRID
12022	HIST	1120	1N7	3	United States History II		ONLINE	Powers, Michael	\$50			x	
12369	HIST	1130	1N7	3	World History I		ONLINE	Anderson, Aaron	\$50			x	
12035	HIST	1140	1N7	3	World History II		ONLINE	Anderson, Aaron	\$50			x	
12046	HIST	2110	1N7	3	Survey of New Mexico History		ONLINE	Bridinger De Leon, Vicki	\$50			x	

## Nursing

CCRN	SUBJ	NUM	SEC	HRS	TITLE	DAYS	TIME	INSTRUCTOR	FEES	COURSE MODE OPTIONS			
										ON CAMPUS	LIVE ONLINE	ONLINE	HYBRID
12341	NSG	105	1N7	3	Medical Terminology		ONLINE	McGill, Shawna	\$50			x	
12147	NSG	128	1N7	4	Pathophysiology		ONLINE	Jones, Robin	\$50			x	
11750	NSG	150	1N7	3	Healthcare Ethics		ONLINE	McGill, Shawna	\$50			x	

## Nutrition

CRN	SUBJ	NUM	SEC	HRS	TITLE	DAYS	TIME	INSTRUCTOR	FEES	COURSE MODE OPTIONS			
										ON CAMPUS	LIVE ONLINE	ONLINE	HYBRID
12219	NUTR	2110	1N7	3	Human Nutrition		ONLINE	TBD	\$50			x	

## Occupational Technology

CRN	SUBJ	NUM	SEC	HRS	TITLE	DAYS	TIME	INSTRUCTOR	FEES	COURSE MODE OPTIONS			
										ON CAMPUS	LIVE ONLINE	ONLINE	HYBRID
10366	OT	122	135	2	Woodworking I	TR	6:45 pm - 9:15 pm	Oborny, Robert		x			
10370	OT	123	135	2	Woodworking II	TR	6:45 pm - 9:15 pm	Oborny, Robert		x			

## Physical Education (HPE Activity Courses)

CRN	SUBJ	NUM	SEC	HRS	TITLE	DAYS	TIME	INSTRUCTOR	FEES	COURSE MODE OPTIONS			
										ON CAMPUS	LIVE ONLINE	ONLINE	HYBRID
12203	PHED	1230	135	1	Individual Sport: Tennis	MW	10:00 am - 11:40 am	Albin, Jeannette		x			
12411	PHED	1230	136	1	Individual Sport: Golf	MW	8:00 am - 9:40 am	Lincoln, William		x			
<i>Students must provide their own golf clubs.</i>													
12181	PHED	1620	135	1	Fitness: Indoor Cycling	TR	9:00 am - 10:40 am	TBD		x			
12325	PHED	1620	136	1	Fitness: Walking for Fitness	MTWR	8:00 am - 8:50 am	TBD		x			
12204	PHED	2230	135	1	Ind. Sport II: Intermed Tennis	TR	6:00 pm - 7:40 pm	TBD		x			

## Political Science

CRN	SUBJ	NUM	SEC	HRS	TITLE	DAYS	TIME	INSTRUCTOR	FEES	COURSE MODE OPTIONS			
										ON CAMPUS	LIVE ONLINE	ONLINE	HYBRID
<b>12417</b>	POLS	1120	1N7	3	American National Government		ONLINE	Rapp, Gregory	\$50			X	

## Psychology

CRN	SUBJ	NUM	SEC	HRS	TITLE	DAYS	TIME	INSTRUCTOR	FEES	COURSE MODE OPTIONS			
										ON CAMPUS	LIVE ONLINE	ONLINE	HYBRID
<b>12089</b>	PSYC	1110	1N7	3	Introduction to Psychology		ONLINE	Thomas, Angela-Faith	\$50			X	
<b>12094</b>	PSYC	2120	1N7	3	Developmental Psychology		ONLINE	Sena, Mindy	\$50			X	

## Sociology

CRN	SUBJ	NUM	SEC	HRS	TITLE	DAYS	TIME	INSTRUCTOR	FEES	COURSE MODE OPTIONS			
										ON CAMPUS	LIVE ONLINE	ONLINE	HYBRID
<b>12109</b>	SOCI	1110	1N7	3	Introduction to Sociology		ONLINE	Richeson, J	\$50			X	

## Transitional Studies

CRN	SUBJ	NUM	SEC	HRS	TITLE	DAYS	TIME	INSTRUCTOR	FEES	COURSE MODE OPTIONS			
										ON CAMPUS	LIVE ONLINE	ONLINE	HYBRID
<b>11686</b>	TRST	0911	135	3	Basic Writing Skills II	MW	6:00 pm - 8:30 pm	TBD		X			
<b>11693</b>	TRST	0921	135	3	Basic Reading Skills II	TR	6:00 pm - 8:30 pm	TBD		X			
<b>11758</b>	TRST	0930	1N7	4	Basic Algebra I		ONLINE	Pharies, Donna	\$50			X	
<b>11704</b>	TRST	0931	135	4	Basic Algebra II	MTWR	12:00 pm - 1:40 pm	Conn, Drena		X			
<b>12444</b>	TRST	0931	136	4	Basic Algebra II	MW	6:00 pm - 9:15 pm	Hardage, Robin		X			
<b>11705</b>	TRST	0931	1N7	4	Basic Algebra II		ONLINE	Powell, Larry	\$50			X	

## PATHWAY ONLINE SERVICES PORTAL

Pathway is CCC's online services portal for students to access information and services. When you are admitted to CCC, you will be issued a C-Number for accessing your Pathway account. For help with Pathway, please call the CCC Help Desk at [575.769.4969](tel:575.769.4969).

[pathway.clovis.edu](http://pathway.clovis.edu)

- Register, add, or drop classes
- Access Student Email
- View Transcripts
- Access Library Resources
- ...and more!

## REGISTRATION & NEW STUDENT INFO

### ACCUPLACER ASSESSMENT

All students enrolling for the first time in courses with a math component, a writing component, or courses that require extensive reading are required to take the Accuplacer assessment before registering. The Accuplacer assessment is given in the Testing Center. Students are required to register for the appropriate level of classes indicated by the results of the assessment.

The computerized assessment is free and covers mathematics, writing, and reading. Low scores will not keep students from enrolling in college, but some courses and programs have minimum score requirements.

Students may be exempt from taking the Accuplacer assessment if they have other test scores (e.g., ACT/SAT) that demonstrate college level skills. A valid picture identification is required when testing. After completing the assessment, take a copy of your Accuplacer Student Score Report to your Academic Advisor.

For more information on the Accuplacer assessment, including Testing Center hours of operation, call the Testing Center at [575.769.4088](tel:575.769.4088).

### ADVISING

All students are encouraged to contact an Advisor prior to registering for assistance with course selection. The following students are required to meet with an Academic Advisor:

- First-time, degree-seeking students
- All Financial Aid students
- Students applying for Veteran's Assistance
- Students returning from academic probation or suspension status

Advisors are available on a walk-in basis. Each Advisor specializes in different major fields and student needs. Please contact the Academic Advising Office at [575.769.4020](tel:575.769.4020) or email [academic.advising@clovis.edu](mailto:academic.advising@clovis.edu) for hours of operation or more information.

## BOOKS AND SUPPLIES

Books and supplies are available at CCC's Bookstore. Please purchase your books prior to your first class meeting. More information regarding book orders and rentals can be found at [clovis.edu/bookstore](http://clovis.edu/bookstore).

### Textbooks are now more accessible and affordable!



In Fall 2021, Clovis Community College implemented a new Textbook Affordability Package to provide students with easier access to textbooks at an average cost savings of 38%\*. Textbook costs are automatically built into tuition and fees at the time of registration. Now students can stop by the bookstore and pick up books or have them shipped directly to their home with no additional costs. This allows for a streamlined process for financial aid charging, and textbook costs may be tax deductible.

#### TRADITIONAL TEXTBOOK AFFORDABILITY PACKAGE

This is a textbook rental package for most general education courses and some program courses. See [clovis.edu/bookstore](http://clovis.edu/bookstore) for a complete list of courses. Students will have the option to purchase the rentals at the end of the semester by paying the difference in rental and purchase costs plus a \$10 purchase fee.

Textbook costs are \$25 per credit hour, which includes textbooks\*\*, lab manuals, and access codes. This fee excludes any lab kits or supplies such as dissection kits, art supplies, etc.

#### PROGRAMMATIC TEXTBOOK AFFORDABILITY PACKAGE

This is a package in which books are purchased as a bundle in order to offer a lower cost to students. See [clovis.edu/bookstore](http://clovis.edu/bookstore) for a complete list of programmatic textbook fees for the following programs:

- Automotive
- Electrical Maintenance
- Industrial Technology
- Nursing
- Phlebotomy
- Radiologic Technology
- Welding

Students who wish to opt out of the Textbook Affordability Package are responsible for all textbook costs and must contact [academic.advising@clovis.edu](mailto:academic.advising@clovis.edu) or [575.769.4099](tel:575.769.4099) for textbook advising. Textbooks will be available the week before classes start. Stop by the campus bookstore to pick up your textbooks or contact them at [575.769.4050](tel:575.769.4050) or [bookstore@clovis.edu](mailto:bookstore@clovis.edu) to schedule free delivery.

\* Average annual textbook cost for CCC students enrolled in 12-credit hours of non-programmatic courses was \$960 in 2020-2021. With the Textbook Affordability Package Program, annual textbook costs are \$600 for students enrolled in 12-credit hours of non-programmatic courses, a 38% savings.

\*\* Rentals must be returned at the end of the semester.

## CAMPUS TOURS & STUDENT ORIENTATION

Attending orientation is important in answering any questions you may have about your college career. Orientation topics include: student services; campus resources; meeting students and staff; and getting involved. Take advantage of this opportunity to meet other new students and take a campus tour with a member of the Student Ambassador program. If you are a first-time student, it is highly recommended you attend orientation. We are confident that CCC can help you establish a good start to a successful semester and help lay the foundation for your college career. If you have any questions about spring orientation, please contact the Admissions & Records Office by calling or texting [575.479.5006](tel:575.479.5006).

Spring Orientation will be held on campus and in a virtual format on Tuesday, January 12, 2022. Watch your email for an invitation.

## CLASS CANCELLATIONS

Classes may be canceled for lack of enrollment or if an instructor is unavailable. Please login to your CCC student email via Pathway at [pathway.clovis.edu](http://pathway.clovis.edu) to see if any of your classes have been canceled. If so, please check the online schedule or see an Advisor to select an alternate class.

## CLASSROOM LOCATION

To view your classroom location online, login to Pathway at [pathway.clovis.edu](http://pathway.clovis.edu), click on the **Student Tab**, click on the **Student Detail Schedule** in the Student Quick Links box in the middle column, select your term, and then click **submit**.

Complete classroom locations and instructor listings will be posted at the main entrances of the campus during the first week of classes.

## NOTICE OF NON-DISCRIMINATION

Clovis Community College does not discriminate on the basis of race, color, national origin, ancestry, religion, sex, sexual orientation, spousal affiliation, gender identity, veteran status, physical or mental disability, serious medical condition, or age in its programs and activities. The following personnel have been designated to handle inquiries regarding the non-discrimination policies:

Mr. Freddie Salazar, Director of Security  
417 Schepps Blvd. Clovis, NM 88101, Room 134  
[575.769.4144](tel:575.769.4144)

Ms. Regina Dart, Director of Human Resource Services  
417 Schepps Blvd. Clovis, NM 88101, Room 112  
[575.769.4045](tel:575.769.4045)

For further information on notice of non-discrimination, visit [wdcrobcolp01.ed.gov/CFAPPS/OCR/contactus.cfm](http://wdcrobcolp01.ed.gov/CFAPPS/OCR/contactus.cfm) for the address and phone number of the office that serves your area, or call [1.800.421.3481](tel:1.800.421.3481).

## PARKING REGISTRATION

Clovis Community College encourages all students to register their vehicles with the Security Office in the Dr. H. A. Miller Student Services Center. You will need your license plate number along with the state of registration and make, model, year, and color of your vehicle to receive your free CCC decal.

## SPECIAL SERVICES & ACADEMIC CASE MANAGEMENT

Students who need assistance for a disability or disabling condition or who need help dealing with personal or educational issues can contact the Special Services and Academic Case Management Coordinator at [575.769.4121](tel:575.769.4121).

## STUDENT EMAIL

All CCC students will be issued an email address. After you are accepted for admission, you will receive a letter detailing login instructions. Student email is CCC's primary method of communication with students. Announcements sent to your email account will contain important information including important deadlines and academic progress; therefore, you should check your CCC email account frequently. Your instructors will also use this email address to contact you. For assistance logging in, call [575.769.4969](tel:575.769.4969).

## STUDENT ID CARD

You will need your student ID card to use resources in the Center for Student Success, Health and Fitness Center (gym), and the Library or to charge your books to your financial aid account in the Bookstore and to pick up financial aid and/or payroll checks. Your student ID card may also be required for identification upon request from Security staff. Your first student ID card is free. A \$10 replacement fee is required for lost cards and should be paid at the Business Office cashier's window.

Please bring your class schedule and a picture ID to the Security Office in the Dr. H. A. Miller Student Services Center to receive your student ID card.

## WITHDRAWING FROM CLASSES

If you withdraw from a class after the last day of late registration, the withdrawal will be recorded as "W" on your transcript. If you feel you will be unable to complete a course successfully, you must withdraw in order to avoid a failing grade for the course. You can withdraw online at [pathway.clovis.edu](http://pathway.clovis.edu) or complete a form in the Admissions and Records Office prior to the deadline. For more information, please contact the Admissions and Records office at [575.769.4025](tel:575.769.4025).

Please see the Academic Calendar at [clovis.edu/academiccalendar](http://clovis.edu/academiccalendar) for final withdrawal dates. Financial aid students should contact the Financial Aid office for information on how withdrawals may affect future financial aid. Withdrawing from a class is final and you cannot be reinstated.

## TUITION, FEES, & PAYMENT

Deadline to pay for Spring 2022 Semester is midnight on **January 3, 2022**. After that date, payment must be made the day of registration.

If payment or other financial arrangement is not made by the payment deadline, class registrations may be voided. It is the student's responsibility to drop classes through the Admissions Office if he or she does not plan to attend. Do not assume registration will automatically be voided for nonpayment. Students who are dropped for nonpayment are encouraged to re-register and make payment arrangements to secure their classes; however, your original class(es) may be closed, and you may have to choose alternate classes.

### TUITION AND FEES

Tuition charges are determined by residency status, the number of credit hours taken, and fees applicable to each course. See the following chart to calculate your tuition charges. Tuition and fees are subject to change due to legislative or Board of Trustee action.

#### Miscellaneous Fees

Student Fee*	\$40
Dishonored Check*	\$25
Graduation	
Certificate/Participating*	\$40
Diploma/Participating*	\$40
Replacement diploma/certificate*	\$25
Health and Fitness Center	
Swimming Pool Usage*	\$20
1-Day Pass*	\$5
5-Day Pass*	\$20
Hybrid Course Fee* (per course)	\$25
ID Card Replacement Fee*	\$10
Mixed Modality Fee* (per course)	\$25
Official Transcript Fee* (plus applicable shipping fees)	\$6
Online Course Fee* (per course)	\$50
Technology and Facilities Fee* (per credit hour)	\$10
Zoom Room Tech* (per credit hour)	\$4

\*Fees are non-refundable

Credit Hour	NM Resident In-District	NM Resident Out-of-District	Non-Resident	Senior Citizen $\diamond$	Technology & Facility Fee
1	44	54	111	5	10
2	88	108	222	10	20
3	132	162	333	15	30
4	176	216	444	20	40
5	220	270	555	25	50
6	264	324	666	30	60
7	308	378	777	35	70
8	352	432	888	40	80
9	396	486	999	45	90
10	440	540	1110	50	100
11	484	594	1221		110
12	528	648	1332		120
13-18+	528	648	1332		120
19	572	702	1443		130
Each Additional Hour	44	54	111		10

$\ddagger$ You can enroll in 13- 18 credits for the same cost as 12 credit hours.  $\diamond$  Senior Citizens must register on or after **November 9, 2021** to be eligible for the reduced rate.

### RESIDENCY STATUS FOR TUITION PURPOSES

Tuition charges are determined by your residency status. The Admissions and Records Office classifies residency status for you when your completed application is received and processed. Residency is based on the following definitions:

**Resident In-District:** Students whose legal state of residency is New Mexico, who live within the boundaries of the Clovis Community College tax district, and who have lived in New Mexico for the past 12 consecutive months.

**Resident Out-of-District:** Students whose legal state of residency is New Mexico, and who have lived in New Mexico for the past 12 consecutive months, but who live outside of the Clovis Community College tax district.

Any Texas residents who reside within a 135-mile radius of CCC will be assessed in-state, out-of-district tuition.

**Non-Resident:** Students whose legal state of residency is not New Mexico or who have not lived in New Mexico for the past 12 consecutive months.



**Petitions for In-State Tuition Classification:** You must petition for changes to your residency status by completing a Petition for Resident Tuition Classification. This form is available in the Admissions and Records Office. All requirements must be met by **January 18, 2022** and documentation submitted to the Admissions and Records Office by **February 4, 2022**.

**Military Exemption:** Military personnel and their dependents qualify for in-state tuition rates. Contact the Admissions and Records Office at [575.769.4025](tel:575.769.4025) for assistance.

## FINANCIAL AID

Students eligible for financial aid who would like to charge their tuition and fees must set up a Pending Financial Aid Payment Plan (PFAPP), **even if their file is complete**. Students who withdraw before their financial aid checks are disbursed may lose their eligibility and may be responsible for payment of tuition, fees, books, and miscellaneous charges.

Financial aid students who stop attending, withdraw, or are administratively withdrawn from classes before **April 4, 2022** may be subject to a Federal Refund Calculation.

If you are using Financial Aid, please contact the Financial Aid Office prior to withdrawing. Withdrawing from a class is final and you cannot be reinstated. Contact the Admissions and Records Office at [575.769.4025](tel:575.769.4025) or email [admissions@clovis.edu](mailto:admissions@clovis.edu) if you need assistance.

Students with a PFAPP may charge books and supplies **January 8-28, 2022** (based on remaining eligibility).

Visit the Financial Aid Office or call [575.769.4060](tel:575.769.4060) or email [finaid@clovis.edu](mailto:finaid@clovis.edu) for more detailed information.

## SCHOLARSHIPS

CCC has many scholarships available, ranging from \$100 to \$1,000 per year. Students are encouraged to apply for scholarships to lessen the need for loans or part-time work to attend school. These scholarships are made possible by generous contributions to the College and CCC Foundation.

Apply online for dozens of CCC scholarships at [clovis.academicworks.com](http://clovis.academicworks.com).

## SENIOR CITIZEN DISCOUNT

Senior citizens may register beginning **November 9, 2021** and pay the reduced rate of \$5 per credit hour. Senior citizens who register prior to **November 9, 2021** are not eligible for the senior citizen discount. Qualifications for senior citizen discount:

- Must be 65 years of age by **January 28, 2022**
- Must be **classified as a** New Mexico resident
- Must enroll for **10 credit** hours or less during the semester

Senior citizen students must pay any course fees associated with classes. Senior citizens enrolled at CCC and who receive a reduction in tuition are entitled to all rights and privileges afforded all students.

## PAYMENT OPTIONS

**In-person:** Cash, money orders, checks (made payable to Clovis Community College), MasterCard, Visa, Discover, and American Express payments may be made at the cashier's window across from the Bookstore.

**By phone:** Phone in credit card information to [575.769.4132](tel:575.769.4132) or [575.769.4035](tel:575.769.4035).

**Online:** Login to **Pathway** at [pathway.clovis.edu](http://pathway.clovis.edu)

- Click on the **Student Tab**
- Click on **Pay Here** with TouchNet under Registration Tools

## Third-Party Sponsor:

If a third party (i.e., employer or government agency) is paying tuition and fees on a student's behalf, either the student or the third party must provide a copy of the authorization to the cashier at the time of registration.

## Deferred Payment Plan:

CCC offers a deferred payment plan administered by TouchNet Information Solutions. To initiate payment plan, login to Pathway at [pathway.clovis.edu](http://pathway.clovis.edu). Students must have a checking or credit card account to schedule and make payments, and students must be enrolled in at least three credit hours to take advantage of the payment plan. Students should initiate the contract and make initial payment at the time of registration to confirm their registration. Students are charged a non-refundable fee of \$10 to use the deferred payment plan.

## IMPORTANT FAFSA INFORMATION

Financial Aid students meeting the priority deadline of **December 3, 2021** will be guaranteed to have their financial aid processed by the first day of classes. To meet a priority deadline, you must have been admitted to or be currently enrolled in a degree-seeking program at CCC, have submitted a valid FAFSA to the federal government with the results received by CCC, be in good standing for financial aid, and submit all additional documentation required, if any, for the completion of your file. Any required corrections could delay completion of your file. You should login to PATHWAY to check for any outstanding financial aid documents and/or requirements.

Consumer information for Clovis Community College, including our graduation rates, the median debt of students completing programs, and other important information, can be found at: [clovis.edu/consumerinfo](http://clovis.edu/consumerinfo).

WALKING/JOGGING TRACK

ALLIED HEALTH AND LIBRARY

INTERACTIVE MUSEUM

Trades Road

JOE AND CHARLYNE SISLER  
ALLIED HEALTH BUILDING

DON AND GUSTENIA BONNER  
NURSING EDUCATION BUILDING

DR. W. D. DABBS  
LIBRARY

PARKING

PARKING

PARKING

PARKING

PARKING

Trades Road

TENNIS COURTS

CAMPUS MAIN BUILDING  
FIRST FLOOR

CAMPUS MAIN BUILDING  
SECOND FLOOR

MAIN  
ENTRANCE

CLASSROOM SOUTH

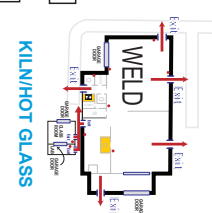
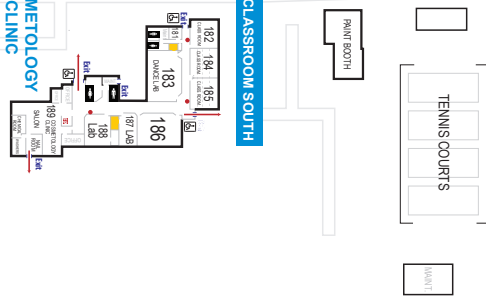
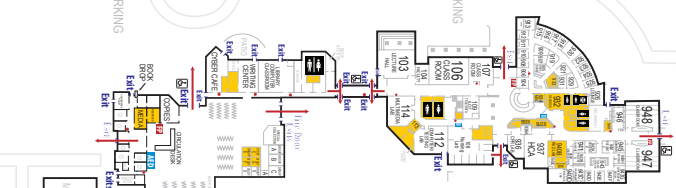
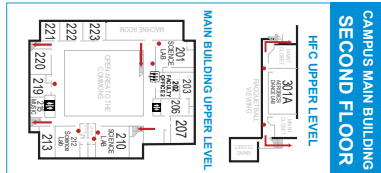
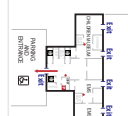
COSMETOLOGY  
CLINIC

KILN/HOT GLASS

STORAGE: HANDBAGS

LANDSCAPE MAINTENANCE

STORAGE: STAIRS



LR LOCKER ROOM  
O OFFICE  
S STORAGE

LEGEND  
REST ROOMS  
HANDICAP ACCESS  
ELEVATOR

← FIRE EXIT ROUTES  
Exits  
TORNADO SAFE AREA  
FIRE EXTINGUISHER  
FIRE PANELS  
AED



**Clovis  
Community  
College**

**REGISTER ONLINE: [Clovis.edu/register](https://clovis.edu/register)**

For list of course and program fees, visit [clovis.edu/fees](https://clovis.edu/fees)