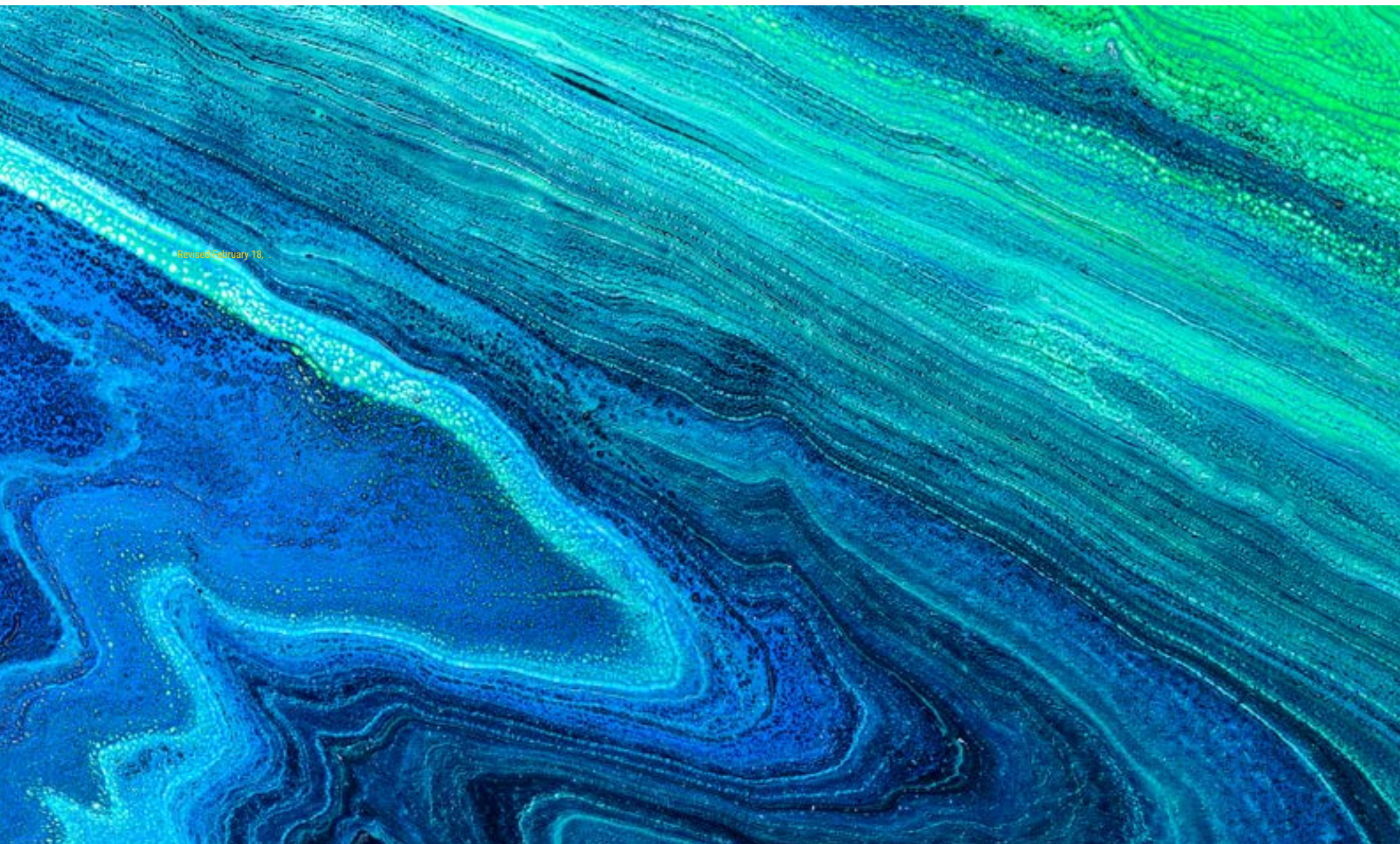




# SUMMER 2023

COURSE  
SCHEDULES



Revised February 18, ...



Call or text **Clovis Community College** at **575.479.5006** or email **recruitment@clovis.edu** to set up your personalized journey today.

### **STEP 1: APPLY FOR ADMISSION**

Visit **clovis.edu/apply** to apply online or fill out an application on campus. Send all official transcripts to **admissions@clovis.edu**.

### **STEP 2: COMPLETE FINANCIAL AID**

Go to **studentaid.gov** to complete the Free Application for Federal Student Aid (FAFSA). For more information on financial aid or scholarships, call **575.769.4060** or email **finaid@clovis.edu**.

### **STEP 3: CONNECT WITH CAREER SERVICES**

Unsure of what to study? Meet with the Career Services Coordinator to complete the Career Interest Inventory. Call **575.769.4085** or email **career.services@clovis.edu** to schedule an appointment.

### **STEP 4: MEET WITH YOUR ADVISOR**

Advisors can help interpret placement scores, evaluate transcripts from other schools and assist in selecting classes for the upcoming semester. Call **575.769.4020** or email **academic.advising@clovis.edu** to schedule an appointment.

### **STEP 5: MAKE PAYMENT ARRANGEMENTS**

For more information regarding payment, please contact the Business Office at **575.769.4035** or visit **clovis.edu/payment**.

### **STEP 6: GET YOUR STUDENT ID**

Say cheese! Once payment arrangements have been made, obtain a student ID card by visiting Campus Security. Your student ID is needed at the library, gym, computer labs, and more!

Clovis Community College... A Caring Campus

## IMPORTANT DATES

Summer Registration begins  
**April 10, 2023.**

Senior Citizen registration begins on  
**April 11** and ends on the last day of  
registration for the term listed below.

Classes start **June 5.**

### Classes Begin/End

Regular 8-week term . . . . . June 5 - July 28  
First 4-week term . . . . . June 5 - June 30  
Second 4-week term . . . . . July 3 - July 28

### Last day to register, add, or drop a class or change from audit to credit

Regular 8-week term . . . . . June 9  
First 4-week term . . . . . June 6  
Second 4-week term . . . . . July 5

### Last day to change from credit to audit

Regular 8-week term . . . . . July 5  
First 4-week term . . . . . June 16  
Second 4-week term . . . . . July 14

### Last day to withdraw from a class

Regular 8-week term . . . . . July 14  
First 4-week term . . . . . June 23  
Second 4-week term . . . . . July 21  
(Workshops: before the first meeting)

### Finals Week:

You may have a different class meeting time during Finals  
Week. Please check your course syllabus for details.

### Holiday Closures (Campus Closed)

Memorial Day . . . . . May 29  
Juneteenth Holiday . . . . . June 19  
Independence Day Holiday . . . . . July 4

### Ceremony

Nurses' Pinning Ceremony . . . . . July 27

### Graduation Application Deadline

Summer 2023 Diploma/Certificate . . . . . July 14

### Refund Schedule

Full refund of tuition and fees will be issued on canceled  
classes. Refunds are processed after registration closes  
and financial aid is complete and will be mailed to students  
approximately four weeks after registration closes.

If you have any questions, contact the Business Affairs  
Office at [575.769.4132](tel:575.769.4132) or see [www.clovis.edu/fees](http://www.clovis.edu/fees).

Students who drop a workshop must notify the Business  
Affairs Office to begin the refund process.

### Regular 8-Week Term

June 5 - 9 . . . . . 100% refund  
June 10 - July 28 . . . . . 0% refund

### First 4-Week Term

June 5 - 7 . . . . . 100% refund  
June 8 - June 30 . . . . . 0% refund

### Second 4-Week Term

July 3 - 7 . . . . . 100% refund  
July 8 - 28 . . . . . 0% refund

### Textbook Affordability Package (TAP) Opt Out Information

See page 13 for opt out deadlines

### Workshops

Before the first meeting . . . . . 100% refund

### Final Exams

Regular 8-week term . . . . . July 24 - 28  
First 4-week term . . . . . June 26 - 30  
Second 4-week term . . . . . July 24 - 28

This class schedule is subject to change after publication. Please check for changes with the Academic Advising Office or the CCC website for the most up-to-date course information. Consumer information for Clovis Community College, including our graduation rates, the median debt of students completing programs, and other important information, can be found at: [clovis.edu/consumerinfo](http://clovis.edu/consumerinfo).



# CLOVIS COMMUNITY COLLEGE COURSE MODELS AT-A-GLANCE

## WHERE



BRICK-AND-MORTAR



VIRTUAL LEARNING  
ENVIRONMENT

## WHEN



AT A SCHEDULED  
TIME



AT STUDENT'S  
OWN TIME  
Assignment deadlines  
determined by instructor)

## HOW



ON-SITE  
CLASSROOM  
TECHNOLOGY



MOBILE  
TECHNOLOGY

## ON CAMPUS



## LIVE ONLINE



## FULLY ONLINE



## HYBRID | Both Required

ON CAMPUS



ONLINE



## MIXED | Student decides based on modes defined by instructor

ON CAMPUS



OR

LIVE ONLINE



OR

FULLY ONLINE



## Clovis Community College

Course Modes Info-graphic Text Description.

### WHERE

1. On Campus - At Clovis Community College
2. Online - Virtual Learning Environment

### WHEN

1. Live - At a designated, scheduled time
2. Online - At the student's own time

### HOW

1. On-site Classroom Technology
2. Mobile Technology (home computer, mobile phone, laptop)

## Course Model Descriptions

### On Campus

- Where: All class time spent on CCC campus
- When: Live, at a designated, scheduled time
- How: Using on-site classroom technology

### Live Online

- Where: All class time spent in a virtual learning environment
- When: Live, at a designated, scheduled time
- How: Using mobile technology

### Fully Online

- Where: All class time spent in a virtual learning environment
- When: Online, at the student's own time (assignment deadlines specified by instructor)
- How: Using mobile technology

### Hybrid

- Where: Portion of the course is spent on campus, and portion is spent online in a virtual learning environment
- When: Class time occurs with a mix of designated, scheduled time and work at the student's own time
- How: Using both on-site classroom and mobile technology

### Mixed

Instructor defines the mode; Student decides how to participate

- On Campus - At a designated, scheduled time
- Live Online - At a designated, scheduled time
- Fully Online - completed on the student's own time (assignment deadlines specified by instructor)

## Accounting

| CRN   | SUBJ | NUM  | SEC | HRS | TITLE                      | DAYS | TIME   | INSTRUCTOR     | FEES | COURSE MODE OPTIONS |             |        |        |
|-------|------|------|-----|-----|----------------------------|------|--------|----------------|------|---------------------|-------------|--------|--------|
|       |      |      |     |     |                            |      |        |                |      | ON CAMPUS           | LIVE ONLINE | ONLINE | HYBRID |
| 20625 | ACCT | 2110 | 2N0 | 4   | Principles of Accounting I |      | ONLINE | Turner, Monica | \$50 |                     |             | x      |        |

## Anthropology

| CRN   | SUBJ | NUM  | SEC | HRS | TITLE                          | DAYS | TIME   | INSTRUCTOR          | FEES | COURSE MODE OPTIONS |             |        |        |
|-------|------|------|-----|-----|--------------------------------|------|--------|---------------------|------|---------------------|-------------|--------|--------|
|       |      |      |     |     |                                |      |        |                     |      | ON CAMPUS           | LIVE ONLINE | ONLINE | HYBRID |
| 20626 | ANTH | 1140 | 2N0 | 3   | Intro to Cultural Anthropology |      | ONLINE | Schipani, Alexandra | \$50 |                     |             | x      |        |

## Art History

| CRN   | SUBJ | NUM  | SEC | HRS | TITLE            | DAYS | TIME              | INSTRUCTOR          | FEES | COURSE MODE OPTIONS |             |        |        |
|-------|------|------|-----|-----|------------------|------|-------------------|---------------------|------|---------------------|-------------|--------|--------|
|       |      |      |     |     |                  |      |                   |                     |      | ON CAMPUS           | LIVE ONLINE | ONLINE | HYBRID |
| 20807 | ARTH | 1110 | 201 | 3   | Art Appreciation | MTWR | 10:30 am-11:45 am | Ziegenfuss, Jessica |      | x                   |             |        |        |
| 20627 | ARTH | 1110 | 2N0 | 3   | Art Appreciation |      | ONLINE            | Anderson, Marsha    | \$50 |                     |             | x      |        |
| 20820 | ARTH | 2110 | 2N0 | 3   | History of Art I |      | ONLINE            | Bermudez, Stanley   | \$50 |                     |             | x      |        |

## Art Studio

| CRN   | SUBJ | NUM  | SEC | HRS | TITLE                 | DAYS | TIME            | INSTRUCTOR          | FEES | COURSE MODE OPTIONS |             |        |        |
|-------|------|------|-----|-----|-----------------------|------|-----------------|---------------------|------|---------------------|-------------|--------|--------|
|       |      |      |     |     |                       |      |                 |                     |      | ON CAMPUS           | LIVE ONLINE | ONLINE | HYBRID |
| 20808 | ARTS | 1340 | 201 | 3   | Functional Ceramics I | TR   | 3:00 pm-5:30 pm | Ziegenfuss, Jessica | \$30 | x                   |             |        |        |

## Automotive Technology

The full-time Automotive Technology program runs Monday - Thursday from 7 a.m. to 12:15 p.m. To apply students should call 575.769.4945 or stop by Room 403. Students must complete AT 100 with a C or better, complete an OT application, and meet the Accuplacer score requirements prior to being accepted into the program. Applications are now being accepted for Fall 2023.

## Biology

| CRN   | SUBJ | NUM   | SEC | HRS | TITLE                          | DAYS | TIME             | INSTRUCTOR       | FEES | COURSE MODE OPTIONS |             |        |        |
|-------|------|-------|-----|-----|--------------------------------|------|------------------|------------------|------|---------------------|-------------|--------|--------|
|       |      |       |     |     |                                |      |                  |                  |      | ON CAMPUS           | LIVE ONLINE | ONLINE | HYBRID |
| 20633 | BIOL | 1110C | 2N0 | 4   | General Biology Lecture/Lab    |      | ONLINE           | Roberts, Cory    | \$50 |                     |             | x      |        |
| 20634 | BIOL | 1130C | 2N0 | 4   | Intro Anat/Phys Lec/Lab NonMaj |      | ONLINE           | Newton, Joy      | \$50 |                     |             | x      |        |
| 20797 | BIOL | 2210C | 2L0 | 4   | Human Anat/Phys I Lec/Lab      | MTWR | 6:00 pm-8:30 pm  | Minteer, Allison | \$50 |                     | x           |        |        |
| 20637 | BIOL | 2210C | 2N0 | 4   | Human Anat/Phys I Lec/Lab      |      | ONLINE           | Newton, Joy      | \$50 |                     |             | x      |        |
| 20639 | BIOL | 2225C | 2N0 | 4   | Human Anat/Phys II Lec/Lab     |      | ONLINE           | Newton, Joy      | \$50 |                     |             | x      |        |
| 20640 | BIOL | 2310C | 201 | 4   | Microbiology Lecture/Lab       | MTWR | 9:00 am-11:30 am | Hughes, Michelle | \$20 | x                   |             |        |        |
| 20641 | BIOL | 2310C | 2N0 | 4   | Microbiology Lecture/Lab       |      | ONLINE           | Hughes, Michelle | \$50 |                     |             | x      |        |

## Business Administration

| CRN   | SUBJ | NUM  | SEC | HRS | TITLE                    | DAYS | TIME   | INSTRUCTOR    | FEES | COURSE MODE OPTIONS |             |        |        |
|-------|------|------|-----|-----|--------------------------|------|--------|---------------|------|---------------------|-------------|--------|--------|
|       |      |      |     |     |                          |      |        |               |      | ON CAMPUS           | LIVE ONLINE | ONLINE | HYBRID |
| 20642 | BUSA | 1110 | 2N0 | 3   | Introduction to Business |      | ONLINE | Reed, Melissa | \$50 |                     |             | x      |        |

## Business Computer Information Systems

| CRN  | SUBJ | NUM  | SEC | HRS | TITLE                         | DAYS | TIME   | INSTRUCTOR   | FEES | COURSE MODE OPTIONS |             |        |        |
|--|------|------|-----|-----|-------------------------------|------|--------|--------------|------|---------------------|-------------|--------|--------|
|  |      |      |     |     |                               |      |        |              |      | ON CAMPUS           | LIVE ONLINE | ONLINE | HYBRID |
| 20648  | BCIS | 1110 | 2N0 | 3   | Fund of Info Literacy/Systems |      | ONLINE | Byers, Diana | \$50 |                     |             | x      |        |
| BCIS 1110 covers the Microsoft Office 2019/Office 365 Windows versions of Word, Excel, Access, and PowerPoint. |      |      |     |     |                               |      |        |              |      |                     |             |        |        |

## Business and Office Technology

| CRN   | SUBJ | NUM | SEC | HRS | TITLE                          | DAYS | TIME   | INSTRUCTOR      | FEES | COURSE MODE OPTIONS |             |        |        |
|-------|------|-----|-----|-----|--------------------------------|------|--------|-----------------|------|---------------------|-------------|--------|--------|
|       |      |     |     |     |                                |      |        |                 |      | ON CAMPUS           | LIVE ONLINE | ONLINE | HYBRID |
| 20325 | BOFT | 101 | 2N0 | 1   | Personal Keyboarding           |      | ONLINE | Ewers, Dannette | \$50 |                     |             | x      |        |
| 20326 | BOFT | 102 | 2N0 | 1   | Computerized 10-Key Operations |      | ONLINE | Ewers, Dannette | \$50 |                     |             | x      |        |
| 20809 | BOFT | 115 | 2N0 | 3   | Workplace and Life Essentials  |      | ONLINE | Turner, Monica  | \$50 |                     |             | x      |        |

## Chemistry

| CRN   | SUBJ | NUM   | SEC | HRS | TITLE                         | DAYS | TIME   | INSTRUCTOR          | FEES | COURSE MODE OPTIONS |             |        |        |
|-------|------|-------|-----|-----|-------------------------------|------|--------|---------------------|------|---------------------|-------------|--------|--------|
|       |      |       |     |     |                               |      |        |                     |      | ON CAMPUS           | LIVE ONLINE | ONLINE | HYBRID |
| 20643 | CHEM | 1120C | 2N0 | 4   | Intro to Chem Lec/Lab Non-Maj |      | ONLINE | Omopariola, Ayomide | \$50 |                     |             | x      |        |

## Communication

| CRN   | SUBJ | NUM  | SEC | HRS | TITLE                       | DAYS | TIME             | INSTRUCTOR     | FEES | COURSE MODE OPTIONS |             |        |        |
|-------|------|------|-----|-----|-----------------------------|------|------------------|----------------|------|---------------------|-------------|--------|--------|
|       |      |      |     |     |                             |      |                  |                |      | ON CAMPUS           | LIVE ONLINE | ONLINE | HYBRID |
| 20647 | COMM | 1130 | 2N0 | 3   | Public Speaking             |      | ONLINE           | Knight, Kelsey | \$50 |                     |             | x      |        |
| 20784 | COMM | 2120 | 201 | 3   | Interpersonal Communication | MTWR | 12:00 pm-1:15 pm | Knight, Kelsey |      | x                   |             |        |        |
| 20645 | COMM | 2120 | 2N0 | 3   | Interpersonal Communication |      | ONLINE           | Knight, Kelsey | \$50 |                     |             | x      |        |

## Computer Information Systems

| CRN                                      | SUBJ | NUM | SEC | HRS | TITLE                     | DAYS | TIME   | INSTRUCTOR     | FEES | COURSE MODE OPTIONS |             |        |        |
|--|------|-----|-----|-----|---------------------------|------|--------|----------------|------|---------------------|-------------|--------|--------|
|  |      |     |     |     |                           |      |        |                |      | ON CAMPUS           | LIVE ONLINE | ONLINE | HYBRID |
| 20035                                    | CIS  | 101 | 2N0 | 3   | Fund of Computer Concepts |      | ONLINE | Byers, Diana   | \$50 |                     |             | x      |        |
| 20799                                    | CIS  | 106 | 2N0 | 1   | Windows Fundamentals      |      | ONLINE | Davis, Patrick | \$50 |                     |             | x      |        |
| CIS 106 will be taught using Windows 10. |      |     |     |     |                           |      |        |                |      |                     |             |        |        |
| 20800                                    | CIS  | 107 | 2N0 | 1   | Internet Fundamentals     |      | ONLINE | Davis, Patrick | \$50 |                     |             | x      |        |
| CIS 107 will be taught using Windows 10. |      |     |     |     |                           |      |        |                |      |                     |             |        |        |

## Cosmetology

The Cosmetology program runs Monday - Thursday from 8 a.m. to 5 p.m. To apply students should call 575.769.4945 or stop by Room 403. Students will need to fill out a Cosmetology application, submit high school transcripts to the Office of Admissions, and meet the Accuplacer score requirements prior to being accepted into the program. Applications are now being accepted for Fall 2023.

## Criminal Justice

| CRN   | SUBJ | NUM  | SEC | HRS | TITLE                     | DAYS | TIME   | INSTRUCTOR       | FEES | COURSE MODE OPTIONS |             |        |        |
|-------|------|------|-----|-----|---------------------------|------|--------|------------------|------|---------------------|-------------|--------|--------|
|       |      |      |     |     |                           |      |        |                  |      | ON CAMPUS           | LIVE ONLINE | ONLINE | HYBRID |
| 20649 | CJUS | 1110 | 2N0 | 3   | Intro to Criminal Justice |      | ONLINE | Richeson, J      | \$50 |                     |             | x      |        |
| 20810 | CJUS | 2320 | 2N0 | 3   | Gangs in American Society |      | ONLINE | Salazar, Freddie | \$50 |                     |             | x      |        |

## Dance

| CRN   | SUBJ | NUM  | SEC | HRS | TITLE              | DAYS | TIME   | INSTRUCTOR     | FEES | COURSE MODE OPTIONS |             |        |        |
|-------|------|------|-----|-----|--------------------|------|--------|----------------|------|---------------------|-------------|--------|--------|
|       |      |      |     |     |                    |      |        |                |      | ON CAMPUS           | LIVE ONLINE | ONLINE | HYBRID |
| 20821 | DANC | 1110 | 2N0 | 3   | Dance Appreciation |      | ONLINE | Heath, Bradley | \$50 |                     |             | x      |        |

## Early Childhood Education

| CRN   | SUBJ | NUM  | SEC | HRS | TITLE                         | DAYS | TIME   | INSTRUCTOR         | FEES | COURSE MODE OPTIONS |             |        |        |
|-------|------|------|-----|-----|-------------------------------|------|--------|--------------------|------|---------------------|-------------|--------|--------|
|       |      |      |     |     |                               |      |        |                    |      | ON CAMPUS           | LIVE ONLINE | ONLINE | HYBRID |
| 20651 | ECED | 1110 | 2N0 | 3   | Child Growth, Dev & Learning  |      | ONLINE | Coburn, Michelle   | \$50 |                     |             | x      |        |
| 20652 | ECED | 1115 | 2N0 | 2   | Health, Safety, & Nutrition   |      | ONLINE | Coburn, Michelle   | \$50 |                     |             | x      |        |
| 20654 | ECED | 1120 | 2N0 | 3   | Guiding Young Children        |      | ONLINE | Nigreville, Carrie | \$50 |                     |             | x      |        |
| 20655 | ECED | 1125 | 2N0 | 3   | Assessment Child/Eval Program |      | ONLINE | Boreing, Karen     | \$50 |                     |             | x      |        |
| 20653 | ECED | 1130 | 2N0 | 3   | Family & Comm Collaboration   |      | ONLINE | Boreing, Karen     | \$50 |                     |             | x      |        |

## Economics

| CRN   | SUBJ | NUM  | SEC | HRS | TITLE                    | DAYS | TIME   | INSTRUCTOR        | FEES | COURSE MODE OPTIONS |             |        |        |
|-------|------|------|-----|-----|--------------------------|------|--------|-------------------|------|---------------------|-------------|--------|--------|
|       |      |      |     |     |                          |      |        |                   |      | ON CAMPUS           | LIVE ONLINE | ONLINE | HYBRID |
| 20656 | ECON | 2110 | 2N0 | 3   | Macroeconomic Principles |      | ONLINE | Kuykendall, Robin | \$50 |                     |             | x      |        |
| 20657 | ECON | 2120 | 2N0 | 3   | Microeconomic Principles |      | ONLINE | Kuykendall, Robin | \$50 |                     |             | x      |        |

## Electrical Maintenance

The Electrical Maintenance program is part of the Industrial Technology program and trains students in fundamentals of electricity, control systems, planning, design, and power generation and prepares students for jobs that rely on integrated systems. This program is two semesters and runs Tuesdays & Thursdays from 5:30 to 9:15 p.m. To apply students should call 575.769.4945 or stop by Room 403. Students will need to fill out an OT application and meet the Accuplacer score requirements prior to being accepted into the program. Applications are now being accepted for Fall 2023.

## Emergency Medical Services

| CRN   | SUBJ | NUM | SEC | HRS | TITLE                          | DAYS | TIME   | INSTRUCTOR   | FEES | COURSE MODE OPTIONS |             |        |        |
|-------|------|-----|-----|-----|--------------------------------|------|--------|--------------|------|---------------------|-------------|--------|--------|
|       |      |     |     |     |                                |      |        |              |      | ON CAMPUS           | LIVE ONLINE | ONLINE | HYBRID |
| 20595 | EMS  | 115 | 2N0 | 4   | Anat/Phys for EMS Professional |      | ONLINE | Burns, Karen | \$50 |                     |             | x      |        |

## English

| CRN          | SUBJ | NUM  | SEC | HRS | TITLE                      | DAYS | TIME            | INSTRUCTOR     | FEES | COURSE MODE OPTIONS |             |        |        |
|--------------|------|------|-----|-----|----------------------------|------|-----------------|----------------|------|---------------------|-------------|--------|--------|
|              |      |      |     |     |                            |      |                 |                |      | ON CAMPUS           | LIVE ONLINE | ONLINE | HYBRID |
| <b>20658</b> | ENGL | 1110 | 201 | 3   | Composition I              | MW   | 3:00 pm-5:30 pm | Brown, Shauma  |      | x                   |             |        |        |
| <b>20659</b> | ENGL | 1110 | 2N0 | 3   | Composition I              |      | ONLINE          | D'Amour, Linda | \$50 |                     |             | x      |        |
| <b>20660</b> | ENGL | 1120 | 201 | 3   | Composition II             | MW   | 6:00 pm-8:30 pm | Brown, Shauma  |      | x                   |             |        |        |
| <b>20661</b> | ENGL | 1120 | 2N0 | 3   | Composition II             |      | ONLINE          | D'Amour, Linda | \$50 |                     |             | x      |        |
| <b>20663</b> | ENGL | 1410 | 2N0 | 3   | Introduction to Literature |      | ONLINE          | Rapp, Gregory  | \$50 |                     |             | x      |        |
| <b>20801</b> | ENGL | 2610 | 2Z0 | 3   | American Literature I      | MW   | 6:00 pm-8:30 pm | Rapp, Gregory  | \$25 | x                   | x           | x      |        |

## Esthetics/Nail Tech

The Esthetics/Nail Tech program is a combined program that runs Monday-Thursday from 8 a.m. to 5 p.m. To apply students should call 575.769.4945 or stop by Room 403. Students will need to fill out a Cosmetology application, submit high school transcripts to the Office of Admissions, and meet the Accuplacer score requirements prior to being accepted into the program. Applications are now being accepted for Fall 2023.

## First Year Experience

| CRN          | SUBJ | NUM  | SEC | HRS | TITLE              | DAYS | TIME            | INSTRUCTOR     | FEES | COURSE MODE OPTIONS |             |        |        |
|--------------|------|------|-----|-----|--------------------|------|-----------------|----------------|------|---------------------|-------------|--------|--------|
|              |      |      |     |     |                    |      |                 |                |      | ON CAMPUS           | LIVE ONLINE | ONLINE | HYBRID |
| <b>20786</b> | FYEX | 1110 | 2N0 | 3   | First Year Seminar |      | ONLINE          | Watson, Mindy  | \$50 |                     |             | x      |        |
| <b>20787</b> | FYEX | 1113 | 2L0 | 5   | Academic Literacy  | TR   | 6:00 pm-8:30 pm | Urioste, Robin | \$50 |                     | x           |        |        |
| <b>20788</b> | FYEX | 1113 | 2N0 | 5   | Academic Literacy  |      | ONLINE          | TBD            | \$50 |                     |             | x      |        |

## Health Care Assistant

| CRN          | SUBJ | NUM | SEC | HRS | TITLE                 | DAYS | TIME            | INSTRUCTOR             | FEES | COURSE MODE OPTIONS |             |        |        |
|--------------|------|-----|-----|-----|-----------------------|------|-----------------|------------------------|------|---------------------|-------------|--------|--------|
|              |      |     |     |     |                       |      |                 |                        |      | ON CAMPUS           | LIVE ONLINE | ONLINE | HYBRID |
| <b>20076</b> | HCA  | 101 | 2B0 | 6   | Health Care Assistant | WR   | 9:00 am-2:00 pm | Soto, Elena/Toni, West | \$65 |                     |             |        | x      |

## Health Education (HPE Academic Courses)

| CRN          | SUBJ | NUM  | SEC | HRS | TITLE                         | DAYS | TIME   | INSTRUCTOR     | FEES | COURSE MODE OPTIONS |             |        |        |
|--------------|------|------|-----|-----|-------------------------------|------|--------|----------------|------|---------------------|-------------|--------|--------|
|              |      |      |     |     |                               |      |        |                |      | ON CAMPUS           | LIVE ONLINE | ONLINE | HYBRID |
| <b>20699</b> | HLED | 1130 | 2N0 | 3   | Concepts of Health & Wellness |      | ONLINE | Heath, Bradley | \$50 |                     |             | x      |        |
| <b>20698</b> | HLED | 1220 | 2N0 | 2   | Personal Health Management    |      | ONLINE | Heath, Bradley | \$50 |                     |             | x      |        |

## History

| CRN          | SUBJ | NUM  | SEC | HRS | TITLE                        | DAYS | TIME   | INSTRUCTOR               | FEES | COURSE MODE OPTIONS |             |        |        |
|--------------|------|------|-----|-----|------------------------------|------|--------|--------------------------|------|---------------------|-------------|--------|--------|
|              |      |      |     |     |                              |      |        |                          |      | ON CAMPUS           | LIVE ONLINE | ONLINE | HYBRID |
| <b>20664</b> | HIST | 1110 | 2N0 | 3   | United States History I      |      | ONLINE | Bridinger De Leon, Vicki | \$50 |                     |             | x      |        |
| <b>20665</b> | HIST | 1120 | 2N0 | 3   | United States History II     |      | ONLINE | Anderson, Aaron          | \$50 |                     |             | x      |        |
| <b>20811</b> | HIST | 1130 | 2N0 | 3   | World History I              |      | ONLINE | Anderson, Aaron          | \$50 |                     |             | x      |        |
| <b>20666</b> | HIST | 1140 | 2N0 | 3   | World History II             |      | ONLINE | Anderson, Aaron          | \$50 |                     |             | x      |        |
| <b>20668</b> | HIST | 2110 | 2N0 | 3   | Survey of New Mexico History |      | ONLINE | Bridinger De Leon, Vicki | \$50 |                     |             | x      |        |



Humanities

| CRN   | SUBJ | NUM  | SEC | HRS | TITLE                        | DAYS | TIME   | INSTRUCTOR   | FEES | COURSE MODE OPTIONS |             |        |        |
|-------|------|------|-----|-----|------------------------------|------|--------|--------------|------|---------------------|-------------|--------|--------|
|       |      |      |     |     |                              |      |        |              |      | ON CAMPUS           | LIVE ONLINE | ONLINE | HYBRID |
| 20669 | HUMN | 1110 | 2N0 | 3   | Intro to World Humanities I  |      | ONLINE | Henry, Robin | \$50 |                     |             | x      |        |
| 20670 | HUMN | 2110 | 2N0 | 3   | Intro to World Humanities II |      | ONLINE | Henry, Robin | \$50 |                     |             | x      |        |

Industrial Technology

The Industrial Technology program offers concentrations in Plant Operations & Equipment and Wind Energy. The program runs Monday - Friday from 8 a.m. to 12 p.m. To apply students should call 575.769.4945 or stop by Room 403. Students will need to fill out an OT application and meet the Accuplacer score requirements prior to being accepted into the program. Applications are now being accepted for Fall 2023.

Legal Studies (Paralegal)

| CRN   | SUBJ | NUM | SEC | HRS | TITLE           | DAYS | TIME   | INSTRUCTOR     | FEES | COURSE MODE OPTIONS |             |        |        |
|-------|------|-----|-----|-----|-----------------|------|--------|----------------|------|---------------------|-------------|--------|--------|
|       |      |     |     |     |                 |      |        |                |      | ON CAMPUS           | LIVE ONLINE | ONLINE | HYBRID |
| 20812 | LEST | 281 | 2N0 | 3   | Real Estate Law |      | ONLINE | Talbert, Laura | \$50 |                     |             | x      |        |

Management

| CRN   | SUBJ | NUM  | SEC | HRS | TITLE                    | DAYS | TIME   | INSTRUCTOR     | FEES | COURSE MODE OPTIONS |             |        |        |
|-------|------|------|-----|-----|--------------------------|------|--------|----------------|------|---------------------|-------------|--------|--------|
|       |      |      |     |     |                          |      |        |                |      | ON CAMPUS           | LIVE ONLINE | ONLINE | HYBRID |
| 20673 | MGMT | 2110 | 2N0 | 3   | Principles of Management |      | ONLINE | Turner, Monica | \$50 |                     |             | x      |        |

Marketing

| CRN   | SUBJ | NUM  | SEC | HRS | TITLE                   | DAYS | TIME   | INSTRUCTOR    | FEES | COURSE MODE OPTIONS |             |        |        |
|-------|------|------|-----|-----|-------------------------|------|--------|---------------|------|---------------------|-------------|--------|--------|
|       |      |      |     |     |                         |      |        |               |      | ON CAMPUS           | LIVE ONLINE | ONLINE | HYBRID |
| 20674 | MKTG | 2110 | 2N0 | 3   | Principles of Marketing |      | ONLINE | Reed, Melissa | \$50 |                     |             | x      |        |

Mathematics

| CRN   | SUBJ | NUM  | SEC | HRS | TITLE                      | DAYS | TIME             | INSTRUCTOR      | FEES | COURSE MODE OPTIONS |             |        |        |
|-------|------|------|-----|-----|----------------------------|------|------------------|-----------------|------|---------------------|-------------|--------|--------|
|       |      |      |     |     |                            |      |                  |                 |      | ON CAMPUS           | LIVE ONLINE | ONLINE | HYBRID |
| 20677 | MATH | 1130 | 2N0 | 3   | Survey of Mathematics      |      | ONLINE           | Brown, Jessica  | \$50 |                     |             | x      |        |
| 20675 | MATH | 1215 | 2N0 | 4   | Intermediate Algebra       |      | ONLINE           | Finney, Brandon | \$50 |                     |             | x      |        |
| 20813 | MATH | 1220 | 2L0 | 3   | College Algebra            | MTWR | 9:00 am-10:15 am | Overbey, David  | \$50 |                     | x           |        |        |
| 20676 | MATH | 1220 | 2N0 | 3   | College Algebra            |      | ONLINE           | Finney, Brandon | \$50 |                     |             | x      |        |
| 20765 | MATH | 1230 | 2N0 | 3   | Trigonometry               |      | ONLINE           | Brown, Jessica  | \$50 |                     |             | x      |        |
| 20697 | MATH | 1350 | 2N0 | 4   | Introduction to Statistics |      | ONLINE           | Brown, Jessica  | \$50 |                     |             | x      |        |
| 20789 | MATH | 1512 | 2N0 | 4   | Calculus I                 |      | ONLINE           | Finney, Brandon | \$50 |                     |             | x      |        |
| 20814 | MATH | 1522 | 2N0 | 4   | Calculus II                |      | ONLINE           | Finney, Brandon | \$50 |                     |             | x      |        |

Music

| CRN   | SUBJ | NUM  | SEC | HRS | TITLE                       | DAYS | TIME   | INSTRUCTOR  | FEES | COURSE MODE OPTIONS |             |        |        |
|-------|------|------|-----|-----|-----------------------------|------|--------|-------------|------|---------------------|-------------|--------|--------|
|       |      |      |     |     |                             |      |        |             |      | ON CAMPUS           | LIVE ONLINE | ONLINE | HYBRID |
| 20777 | MUSC | 1130 | 2N0 | 3   | Music Appreciation: Western |      | ONLINE | Sena, Sarah | \$50 |                     |             | x      |        |

## Nail Tech/Esthetics

The Nail Tech/Esthetics program is a combined program that runs Monday-Thursday from 8 a.m. to 5 p.m. To apply students should call 575.769.4945 or stop by Room 403. Students will need to fill out a Cosmetology application, submit high school transcripts to the Office of Admissions, and meet the Accuplacer score requirements prior to being accepted into the program. Applications are now being accepted for Fall 2023.

## Nursing

| CRN   | SUBJ | NUM | SEC | HRS | TITLE               | DAYS | TIME   | INSTRUCTOR     | FEES | COURSE MODE OPTIONS |             |        |        |
|-------|------|-----|-----|-----|---------------------|------|--------|----------------|------|---------------------|-------------|--------|--------|
|       |      |     |     |     |                     |      |        |                |      | ON CAMPUS           | LIVE ONLINE | ONLINE | HYBRID |
| 20419 | NSG  | 105 | 2N0 | 3   | Medical Terminology |      | ONLINE | West, Toni     | \$50 |                     |             | x      |        |
| 20497 | NSG  | 128 | 2N0 | 4   | Pathophysiology     |      | ONLINE | McGill, Shawna | \$50 |                     |             | x      |        |
| 20562 | NSG  | 150 | 2N0 | 3   | Healthcare Ethics   |      | ONLINE | McGill, Shawna | \$50 |                     |             | x      |        |

The Nursing Program runs Monday-Thursday with exams usually given on Fridays. The application is available at [clovis.edu/nursing](https://clovis.edu/nursing) and should be submitted along with transcripts to the Office of Admissions. Deadlines to submit applications are July 1 for Fall and October 1 for Spring.

## Nutrition

| CRN   | SUBJ | NUM  | SEC | HRS | TITLE           | DAYS | TIME   | INSTRUCTOR   | FEES | COURSE MODE OPTIONS |             |        |        |
|-------|------|------|-----|-----|-----------------|------|--------|--------------|------|---------------------|-------------|--------|--------|
|       |      |      |     |     |                 |      |        |              |      | ON CAMPUS           | LIVE ONLINE | ONLINE | HYBRID |
| 20679 | NUTR | 2110 | 2N0 | 3   | Human Nutrition |      | ONLINE | Bull, Shalon | \$50 |                     |             | x      |        |

## Occupational Technology

| CRN   | SUBJ | NUM | SEC | HRS | TITLE          | DAYS | TIME            | INSTRUCTOR      | FEES | COURSE MODE OPTIONS |             |        |        |
|-------|------|-----|-----|-----|----------------|------|-----------------|-----------------|------|---------------------|-------------|--------|--------|
|       |      |     |     |     |                |      |                 |                 |      | ON CAMPUS           | LIVE ONLINE | ONLINE | HYBRID |
| 20140 | OT   | 122 | 201 | 2   | Woodworking I  | MW   | 6:45 pm-9:15 pm | Oborny, Francis |      | x                   |             |        |        |
| 20141 | OT   | 122 | 202 | 2   | Woodworking I  | TR   | 6:45 pm-9:15 pm | Oborny, Robert  |      | x                   |             |        |        |
| 20142 | OT   | 123 | 201 | 2   | Woodworking II | MW   | 6:45 pm-9:15 pm | Oborny, Francis |      | x                   |             |        |        |
| 20143 | OT   | 123 | 202 | 2   | Woodworking II | TR   | 6:45 pm-9:15 pm | Oborny, Robert  |      | x                   |             |        |        |

## Philosophy

| CRN   | SUBJ | NUM  | SEC | HRS | TITLE                  | DAYS | TIME   | INSTRUCTOR      | FEES | COURSE MODE OPTIONS |             |        |        |
|-------|------|------|-----|-----|------------------------|------|--------|-----------------|------|---------------------|-------------|--------|--------|
|       |      |      |     |     |                        |      |        |                 |      | ON CAMPUS           | LIVE ONLINE | ONLINE | HYBRID |
| 20683 | PHIL | 2110 | 2N0 | 3   | Introduction to Ethics |      | ONLINE | McCarthy, Janet | \$50 |                     |             | x      |        |
| 20733 | PHIL | 2230 | 2N0 | 3   | Philosophical Thought  |      | ONLINE | McCarthy, Janet | \$50 |                     |             | x      |        |

## Phlebotomy

| CRN   | SUBJ | NUM  | SEC | HRS | TITLE                       | DAYS | TIME              | INSTRUCTOR     | FEES | COURSE MODE OPTIONS |             |        |        |
|-------|------|------|-----|-----|-----------------------------|------|-------------------|----------------|------|---------------------|-------------|--------|--------|
|       |      |      |     |     |                             |      |                   |                |      | ON CAMPUS           | LIVE ONLINE | ONLINE | HYBRID |
| 20768 | PHLB | 102  | 2V0 | 3   | Intro to Medical Lab Theory | MTWR | 8:00 am-10:30 am  | Meeks, Garrett |      | x                   |             |        |        |
| 20769 | PHLB | 103  | 2V0 | 3   | Phlebotomy Theory           | MTWR | 8:00 am-10:30 am  | Meeks, Garrett | \$90 | x                   |             |        |        |
| 20770 | PHLB | 103L | 2V0 | 2   | Phlebotomy Lab              | MTWR | 10:30 am-12:30 pm | Meeks, Garrett |      | x                   |             |        |        |
| 20771 | PHLB | 104  | 2V0 | 2   | Clinical Phlebotomy         | MTWR | 1:30 pm-3:30 pm   | Meeks, Garrett | \$60 | x                   |             |        |        |

Students are required to register concurrently for all four of the Phlebotomy courses listed above.

Physical Education (HPE Activity Courses)

| CRN   | SUBJ | NUM  | SEC | HRS | TITLE                          | DAYS | TIME              | INSTRUCTOR            | FEES | COURSE MODE OPTIONS |             |        |        |
|---|------|------|-----|-----|--------------------------------|------|-------------------|-----------------------|------|---------------------|-------------|--------|--------|
|   |      |      |     |     |                                |      |                   |                       |      | ON CAMPUS           | LIVE ONLINE | ONLINE | HYBRID |
| <b>20727</b>  | PHED | 1230 | 201 | 1   | Individual Sport: Golf         | MW   | 7:30 am-9:10 am   | Lincoln, William      |      | x                   |             |        |        |
| <i>Students must provide their own golf clubs.</i>      |      |      |     |     |                                |      |                   |                       |      |                     |             |        |        |
| <b>20703</b>  | PHED | 1320 | 201 | 1   | Aqua Fit: Senior Aquatics      | MTWR | 2:00 pm-2:50 pm   | Williamson, Christine | \$20 | x                   |             |        |        |
| <b>20704</b>  | PHED | 1320 | 202 | 1   | Aqua Fit: Water Aerobics       | MTWR | 9:00 am-9:50 am   | Arnett, Emily         | \$20 | x                   |             |        |        |
| <b>20791</b>  | PHED | 1410 | 201 | 1   | Yoga: Beginning Yoga           | MTWR | 6:10 am-7:00 am   | Golder, Terri         |      | x                   |             |        |        |
| <b>20711</b>  | PHED | 1430 | 201 | 1   | Pilates                        | MTWR | 9:00 am-9:50 am   | Williamson, Christine |      | x                   |             |        |        |
| <b>20712</b>  | PHED | 1510 | 201 | 1   | Training: Body Sculpting       | MTWR | 8:00 am-8:50 am   | Williamson, Christine |      | x                   |             |        |        |
| <b>20715</b>  | PHED | 1510 | 202 | 1   | Training: Body Sculpting       | MTWR | 1:00 pm-1:50 pm   | Williamson, Christine |      | x                   |             |        |        |
| <i>This section is recommended for senior citizens.</i> |      |      |     |     |                                |      |                   |                       |      |                     |             |        |        |
| <b>20713</b>  | PHED | 1510 | 203 | 1   | Training: Beg. Weight Training | MTWR | 12:00 pm-12:50 pm | Heath, Bradley        |      | x                   |             |        |        |
| <b>20815</b>  | PHED | 1510 | 204 | 1   | Training: Bootcamp             | MTWR | 10:00 am-10:50 am | Arnett, Emily         |      | x                   |             |        |        |
| <b>20816</b>  | PHED | 1510 | 205 | 1   | Training: Kickboxing           | TR   | 5:00 pm-6:40 pm   | Watson, Michael       |      | x                   |             |        |        |
| <b>20700</b>  | PHED | 1610 | 201 | 1   | Fitness for Life               |      | TBA               | Heath, Bradley        |      | x                   |             |        |        |
| <b>20721</b>  | PHED | 1620 | 201 | 1   | Fitness: Indoor Cycling        | MTWR | 6:10 am-7:00 am   | O'Rear, Tammi         |      | x                   |             |        |        |
| <b>20724</b>  | PHED | 1620 | 202 | 1   | Fitness: Indoor Cycling        | TR   | 9:00 am-10:40 am  | Heath, Bradley        |      | x                   |             |        |        |
| <b>20725</b>  | PHED | 1620 | 203 | 1   | Fitness: Walking for Fitness   | MTWR | 7:00 am-7:50 am   | Williamson, Christine |      | x                   |             |        |        |
| <b>20726</b>  | PHED | 1620 | 204 | 1   | Fitness: Core Fitness I        | MTWR | 12:00 pm-12:50 pm | Williamson, Christine |      | x                   |             |        |        |
| <b>20803</b>  | PHED | 1710 | 201 | 1   | Martial Arts: Self-Defense     | TR   | 7:00 pm-8:40 pm   | Watson, Michael       |      | x                   |             |        |        |
| <b>20822</b>  | PHED | 2230 | 201 | 1   | Ind Sprt II: Intrm Racquetball | MW   | 5:30 pm-7:10 pm   | Smith, Marcus         |      | x                   |             |        |        |
| <b>20767</b>  | PHED | 2230 | 202 | 1   | Individ. Sport II: Int. Tennis | TR   | 6:00 pm-7:40 pm   | Heath, Bradley        |      | x                   |             |        |        |

Physical Therapist Assistant

The Physical Therapist Assistant Program runs Tuesday-Friday. The application is available at [clovis.edu/pta](https://clovis.edu/pta) and should be submitted along with transcripts and observation hours log to the Office of Admissions. The deadline to submit applications is July 1.

Political Science

| CRN          | SUBJ | NUM  | SEC | HRS | TITLE                        | DAYS | TIME   | INSTRUCTOR    | FEES | COURSE MODE OPTIONS |             |        |        |
|--------------|------|------|-----|-----|------------------------------|------|--------|---------------|------|---------------------|-------------|--------|--------|
|              |      |      |     |     |                              |      |        |               |      | ON CAMPUS           | LIVE ONLINE | ONLINE | HYBRID |
| <b>20684</b> | POLS | 1120 | 2N0 | 3   | American National Government |      | ONLINE | Rapp, Gregory | \$50 |                     |             | x      |        |

Psychology

| CRN          | SUBJ | NUM  | SEC | HRS | TITLE                      | DAYS | TIME            | INSTRUCTOR       | FEES | COURSE MODE OPTIONS |             |        |        |
|--------------|------|------|-----|-----|----------------------------|------|-----------------|------------------|------|---------------------|-------------|--------|--------|
|              |      |      |     |     |                            |      |                 |                  |      | ON CAMPUS           | LIVE ONLINE | ONLINE | HYBRID |
| <b>20773</b> | PSYC | 1110 | 201 | 3   | Introduction to Psychology | MTWR | 4:00 pm-5:15 pm | Smith, Marcus    |      | x                   |             |        |        |
| <b>20687</b> | PSYC | 1110 | 2N0 | 3   | Introduction to Psychology |      | ONLINE          | Piepkorn, Jennie | \$50 |                     |             | x      |        |
| <b>20688</b> | PSYC | 2120 | 2N0 | 3   | Developmental Psychology   |      | ONLINE          | Sena, Mindy      | \$50 |                     |             | x      |        |
| <b>20689</b> | PSYC | 2140 | 2N0 | 3   | Child Psychology           |      | ONLINE          | Thomas, Erin     | \$50 |                     |             | x      |        |
| <b>20817</b> | PSYC | 2445 | 2N0 | 3   | Parenting Skills           |      | ONLINE          | Smith, Marcus    | \$50 |                     |             | x      |        |

Radiologic Technology

The Radiology Program runs Monday-Thursday. The application is available at [clovis.edu/radt](https://clovis.edu/radt) and should be submitted along with transcripts to the Office of Admissions. The deadline to submit applications is July 1.

## Religion

| CRN   | SUBJ | NUM  | SEC | HRS | TITLE                    | DAYS | TIME   | INSTRUCTOR     | FEES | COURSE MODE OPTIONS |             |        |        |
|-------|------|------|-----|-----|--------------------------|------|--------|----------------|------|---------------------|-------------|--------|--------|
|       |      |      |     |     |                          |      |        |                |      | ON CAMPUS           | LIVE ONLINE | ONLINE | HYBRID |
| 20693 | RELG | 1110 | 2N0 | 3   | Intro to World Religions |      | ONLINE | Bush, David    | \$50 |                     |             | x      |        |
| 20691 | RELG | 2220 | 2N0 | 3   | Women of the Bible       |      | ONLINE | Kirby, Richard | \$50 |                     |             | x      |        |
| 20692 | RELG | 2230 | 2N0 | 3   | Men of the Bible         |      | ONLINE | Kirby, Richard | \$50 |                     |             | x      |        |

## Sociology

| CRN   | SUBJ | NUM  | SEC | HRS | TITLE                     | DAYS | TIME   | INSTRUCTOR  | FEES | COURSE MODE OPTIONS |             |        |        |
|-------|------|------|-----|-----|---------------------------|------|--------|-------------|------|---------------------|-------------|--------|--------|
|       |      |      |     |     |                           |      |        |             |      | ON CAMPUS           | LIVE ONLINE | ONLINE | HYBRID |
| 20694 | SOCI | 1110 | 2N0 | 3   | Introduction to Sociology |      | ONLINE | Richeson, J | \$50 |                     |             | x      |        |

## Spanish

| CRN   | SUBJ | NUM  | SEC | HRS | TITLE      | DAYS | TIME   | INSTRUCTOR      | FEES | COURSE MODE OPTIONS |             |        |        |
|-------|------|------|-----|-----|------------|------|--------|-----------------|------|---------------------|-------------|--------|--------|
|       |      |      |     |     |            |      |        |                 |      | ON CAMPUS           | LIVE ONLINE | ONLINE | HYBRID |
| 20695 | SPAN | 1110 | 2N0 | 4   | Spanish I  |      | ONLINE | Guillen, Teresa | \$50 |                     |             | x      |        |
| 20696 | SPAN | 1120 | 2N0 | 4   | Spanish II |      | ONLINE | Guillen, Teresa | \$50 |                     |             | x      |        |

## Transitional Studies

| CRN   | SUBJ | NUM  | SEC | HRS | TITLE            | DAYS | TIME              | INSTRUCTOR     | FEES | COURSE MODE OPTIONS |             |        |        |
|-------|------|------|-----|-----|------------------|------|-------------------|----------------|------|---------------------|-------------|--------|--------|
|       |      |      |     |     |                  |      |                   |                |      | ON CAMPUS           | LIVE ONLINE | ONLINE | HYBRID |
| 20566 | TRST | 0930 | 2N0 | 4   | Basic Algebra I  |      | ONLINE            | Pharies, Donna | \$50 |                     |             | x      |        |
| 20818 | TRST | 0930 | 2Z0 | 4   | Basic Algebra I  | MTWR | 10:30 am-12:10 pm | Conn, Drena    | \$25 | x                   | x           | x      |        |
| 20568 | TRST | 0931 | 2N0 | 4   | Basic Algebra II |      | ONLINE            | Powell, Larry  | \$50 |                     |             | x      |        |
| 20819 | TRST | 0931 | 2Z0 | 4   | Basic Algebra II | MTWR | 12:30 pm-2:10 pm  | Conn, Drena    | \$25 | x                   | x           | x      |        |

## Welding

The full-time Welding program runs Monday - Thursday from 7 a.m. to 12 p.m. To apply students should call 575.769.4945 or stop by Room 403. Students will need to complete an OT application, and meet the Accuplacer score requirements prior to being accepted into the program. Applications are now being accepted for Fall 2023.

## PATHWAY ONLINE SERVICES PORTAL

Pathway is CCC's online services portal for students to access information and services. When you are admitted to CCC, you will be issued a C-Number for accessing your Pathway account. For help with Pathway, please call the CCC Help Desk at [575.769.4969](tel:575.769.4969).

[pathway.clovis.edu](https://pathway.clovis.edu)

- Register, add, or drop classes
- Access Student Email
- View Transcripts
- Access Library Resources
- ...and more!



# REGISTRATION & NEW STUDENT INFO

## ACCUPLACER ASSESSMENT

All students enrolling for the first time in courses with a math component, a writing component, or courses that require extensive reading are required to take the Accuplacer assessment before registering. The Accuplacer assessment is given in the Testing Center. Students are required to register for the appropriate level of classes indicated by the results of the assessment.

The computerized assessment is free and covers mathematics, writing, and reading. Low scores will not keep students from enrolling in college, but some courses and programs have minimum score requirements.

Students may be exempt from taking the Accuplacer assessment if they have other test scores (e.g., ACT/SAT) that demonstrate college level skills. A valid picture identification is required when testing. After completing the assessment, take a copy of your Accuplacer Student Score Report to your Academic Advisor.

For more information on the Accuplacer assessment, including Testing Center hours of operation, call the Testing Center at [575.769.4088](tel:575.769.4088).

## ADVISING

All students are encouraged to contact an Advisor prior to registering for assistance with course selection. The following students are required to meet with an Academic Advisor:

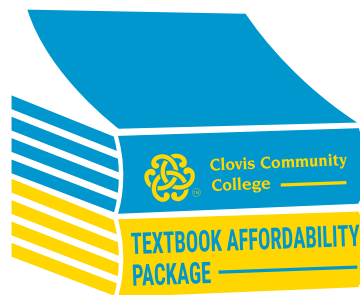
- First-time, degree-seeking students
- All Financial Aid students
- Students applying for Veteran's Assistance
- Students returning from academic probation or suspension status

Advisors are available on a walk-in basis. Each Advisor specializes in different major fields and student needs. Please contact the Academic Advising Office at [575.769.4020](tel:575.769.4020) or email [academic.advising@clovis.edu](mailto:academic.advising@clovis.edu) for hours of operation or more information.

## BOOKS AND SUPPLIES

Books and supplies are available at CCC's Bookstore. Please pick up your books prior to your first class meeting. More information regarding book orders and rentals can be found at [clovis.edu/bookstore](http://clovis.edu/bookstore).

## Textbooks are now more accessible and affordable!



Clovis Community College offers an affordable and convenient option for all your textbooks through the Textbook Affordability Package (TAP). Textbook costs are automatically built into tuition at the time of registration. Students can simply stop by the bookstore and pick up books or have them shipped directly to their homes. This allows for a streamlined process for financial aid charging and there is no more worrying about how to come up with additional money to pay for books.

### TRADITIONAL TEXTBOOK AFFORDABILITY PACKAGE

This is a textbook rental package and it covers most general education courses. See [clovis.edu/bookstore](http://clovis.edu/bookstore) for a complete list of courses. Students will have the option to purchase the rentals at the end of the semester by paying the difference in rental and purchase cost plus a \$10 purchase fee.

Textbook costs are \$36 per credit hour, which includes textbooks\*\*, lab manuals, and access codes. This fee excludes lab kits or supplies such as dissection kits, art supplies, etc.

\*\* Rentals must be returned at the end of the semester.

### PROGRAMMATIC TEXTBOOK AFFORDABILITY PACKAGE

This is a package in which books are purchased as a bundle in order to offer a lower cost to students. See [clovis.edu/bookstore](http://clovis.edu/bookstore) for a complete list of programmatic textbook fees for the following programs:

- Automotive Technology
- Electrical Maintenance
- Emergency Medical Services (EMS)
- Industrial Technology
- Phlebotomy
- Physical Therapist Assistant
- Nursing
- Radiologic Technology
- Welding

### OPTING OUT OF TAP

Students are opted into this program each semester at the time of registration. Students will receive an email through their student email account that includes an opt out link. Students who opt out are opting out of ALL courses for which they are registered and are responsible for all textbook costs. Students should contact [academic.advising@clovis.edu](mailto:academic.advising@clovis.edu) or [575.769.4020](tel:575.769.4020) for textbook advising. Students must opt out each semester by the deadline in order to receive a refund for the TAP fees. Textbooks will be available the week before classes start. Specific textbook and opt out information will be sent to student email addresses each semester. Deadline to opt out for summer is June 9. For questions about opting out or to schedule delivery, students should contact the bookstore at [bookstore@clovis.edu](mailto:bookstore@clovis.edu) or [575.769.4050](tel:575.769.4050).

## CAMPUS TOURS & STUDENT ORIENTATION

Although there is no New Student Orientation held in the Summer semester, our Recruitment Team is happy to give you a tour of campus to help get you ready for your semester. To schedule a tour, you can text [575.479.5006](tel:575.479.5006) or visit <https://clovis.edu/admissions/tours.aspx>.

## CLASS CANCELLATIONS

Classes may be canceled for lack of enrollment or if an instructor is unavailable. Please login to your CCC student email via Pathway at [pathway.clovis.edu](https://pathway.clovis.edu) to see if any of your classes have been canceled. If so, please check the online schedule or see an Advisor to select an alternate class.

## CLASSROOM LOCATION

To view your classroom location online, login to Pathway at [pathway.clovis.edu](https://pathway.clovis.edu), click on the **Student Tab**, click on the **Student Detail Schedule** in the Student Quick Links box in the middle column, select your term, and then click **submit**.

Complete classroom locations and instructor listings will be posted at the main entrances of the campus during the first week of classes.

## NOTICE OF NON-DISCRIMINATION

Clovis Community College does not discriminate on the basis of race, color, national origin, ancestry, religion, sex, sexual orientation, spousal affiliation, gender identity, veteran status, physical or mental disability, serious medical condition, or age in its programs and activities. The following personnel have been designated to handle inquiries regarding the non-discrimination policies:

Director of Security  
417 Schepps Blvd. Clovis, NM 88101, Room 134  
[575.769.4144](tel:575.769.4144)

Director of Human Resource Services  
417 Schepps Blvd. Clovis, NM 88101, Room 112  
[575.769.4045](tel:575.769.4045)

Director of Diversity, Equity & Inclusion  
417 Schepps Blvd. Clovis, NM 88101, Room 138  
[575.769.4184](tel:575.769.4184)

For further information on notice of non-discrimination, visit [wdcrobcolp01.ed.gov/CFAPPS/OCR/contactus.cfm](https://wdcrobcolp01.ed.gov/CFAPPS/OCR/contactus.cfm) for the address and phone number of the office that serves your area, or call [1.800.421.3481](tel:1.800.421.3481).

## PARKING REGISTRATION

Clovis Community College encourages all students to register their vehicles with the Security Office in the Dr. H. A. Miller Student Services Center. You will need your license plate number along with the state of registration and make, model, year, and color of your vehicle to receive your free CCC decal.

## THE OFFICE OF ACCESSIBILITY & RESOURCES

Students who need assistance for a disability or disabling condition or who need help dealing with personal or educational issues can contact the Office of Accessibility and Resources Coordinator/Counselor at [575.769.4121](tel:575.769.4121).

## STUDENT EMAIL

All CCC students will be issued an email address. After you are accepted for admission, you will receive a letter detailing login instructions. Student email is CCC's primary method of communication with students. Announcements sent to your email account will contain important information including important deadlines and academic progress; therefore, you should check your CCC email account frequently. Your instructors will also use this email address to contact you. For assistance logging in, call [575.769.4969](tel:575.769.4969).

## STUDENT ID CARD

You will need your student ID card to use resources in the Center for Student Success, Health and Fitness Center (gym), and the Library or to charge your books to your financial aid account in the Bookstore and to pick up financial aid and/or payroll checks. Your student ID card may also be required for identification upon request from Security staff. Your first student ID card is free. A \$10 replacement fee is required for lost cards and should be paid at the Business Office cashier's window.

Please bring your class schedule and a picture ID to the Security Office in the Dr. H. A. Miller Student Services Center to receive your student ID card.

## WITHDRAWING FROM CLASSES

If you withdraw from a class after the last day of late registration, the withdrawal will be recorded as "W" on your transcript. If you feel you will be unable to complete a course successfully, you must withdraw in order to avoid a failing grade for the course. You can withdraw online at [pathway.clovis.edu](https://pathway.clovis.edu) or complete a form in the Admissions and Records Office prior to the deadline. For more information, please contact the Admissions and Records office at [575.769.4025](tel:575.769.4025).

Please see the Academic Calendar at [clovis.edu/academiccalendar](https://clovis.edu/academiccalendar) for final withdrawal dates. Financial aid students should contact the Financial Aid office for information on how withdrawals may affect future financial aid. Withdrawing from a class is final and you cannot be reinstated.

## TUITION, FEES, & PAYMENT

Deadline to pay for Summer 2023 Semester is midnight on **May 19, 2023**. After that date, payment must be made the day of registration.

If payment or other financial arrangement is not made by the payment deadline, class registrations may be voided. It is the student's responsibility to drop classes through the Admissions Office if he or she does not plan to attend. Do not assume registration will automatically be voided for nonpayment. Students who are dropped for nonpayment are encouraged to re-register and make payment arrangements to secure their classes; however, your original class(es) may be closed, and you may have to choose alternate classes.

### TUITION AND FEES

Tuition charges are determined by residency status, the number of credit hours taken, and fees applicable to each course. See the following chart to calculate your tuition charges. Tuition and fees are subject to change due to legislative or Board of Trustee action.

#### Miscellaneous Fees

|  |      |
|--|------|
| Student Fee*   | \$40 |
| Dishonored Check*  | \$25 |
| Graduation   |      |
| Certificate/Participating*                               | \$40 |
| Diploma/Participating*                                   | \$40 |
| Replacement diploma/certificate*                         | \$25 |
| Health and Fitness Center                                |      |
| Swimming Pool Usage*                                     | \$20 |
| 1-Day Pass*  | \$5  |
| 5-Day Pass*  | \$20 |
| Hybrid Course Fee* (per course)                          | \$25 |
| ID Card Replacement Fee*                                 | \$10 |
| Mixed Modality Fee* (per course)                         | \$25 |
| Official Transcript Fee* (plus applicable shipping fees) | \$6  |
| Online Course Fee* (per course)                          | \$50 |
| Technology and Facilities Fee* (per credit hour)         | \$10 |
| Zoom Room Tech* (per credit hour)                        | \$4  |

**\*Fees are non-refundable**

| Credit Hour          | NM Resident In-District | NM Resident Out-of-District | Non-Resident | Senior Citizen ◇ | Technology & Facility Fee |
|----------------------|-------------------------|-----------------------------|--------------|------------------|---------------------------|
| 1                    | 48                      | 59                          | 121          | 5                | 10                        |
| 2                    | 96                      | 118                         | 242          | 10               | 20                        |
| 3                    | 144                     | 177                         | 363          | 15               | 30                        |
| 4                    | 192                     | 236                         | 484          | 20               | 40                        |
| 5                    | 240                     | 295                         | 605          | 25               | 50                        |
| 6                    | 288                     | 354                         | 726          | 30               | 60                        |
| 7                    | 336                     | 413                         | 847          | 35               | 70                        |
| 8                    | 384                     | 472                         | 968          | 40               | 80                        |
| 9                    | 432                     | 531                         | 1089         | 45               | 90                        |
| 10                   | 480                     | 590                         | 1210         | 50               | 100                       |
| 11                   | 528                     | 649                         | 1331         |                  | 110                       |
| 12                   | 576                     | 708                         | 1452         |                  | 120                       |
| 13-18+               | 576                     | 708                         | 1452         |                  | 120                       |
| 19                   | 624                     | 767                         | 1573         |                  | 130                       |
| Each Additional Hour | 48                      | 59                          | 121          |                  | 10                        |

‡You can enroll in 13- 18 credits for the same cost as 12 credit hours. ◇ Senior Citizens must register on or after **April 11, 2023** to be eligible for the reduced rate.

### RESIDENCY STATUS FOR TUITION PURPOSES

Tuition charges are determined by your residency status. The Admissions and Records Office classifies residency status for you when your completed application is received and processed. Residency is based on the following definitions:

**Resident In-District:** Students whose legal state of residency is New Mexico, who live within the boundaries of the Clovis Community College tax district, and who have lived in New Mexico for the past 12 consecutive months.

**Resident Out-of-District:** Students whose legal state of residency is New Mexico, and who have lived in New Mexico for the past 12 consecutive months, but who live outside of the Clovis Community College tax district.

Any Texas residents who reside within a 135-mile radius of CCC will be assessed in-state, out-of-district tuition.

**Non-Resident:** Students whose legal state of residency is not New Mexico or who have not lived in New Mexico for the past 12 consecutive months.

**Petitions for In-State Tuition Classification:** You must petition for changes to your residency status by completing a Petition for Resident Tuition Classification. This form is available in the Admissions and Records Office. All requirements must be met by **June 5, 2023** and documentation submitted to the Admissions and Records Office by **June 21, 2023**.

**Military Exemption:** Military personnel and their dependents qualify for in-state tuition rates. Contact the Admissions and Records Office at [575.769.4025](tel:575.769.4025) for assistance.

## FINANCIAL AID

Students eligible for financial aid who would like to charge their tuition and fees must set up a Pending Financial Aid Payment Plan (PFAPP), **even if their file is complete**. Students who withdraw before their financial aid checks are disbursed may lose their eligibility and may be responsible for payment of tuition, fees, books, and miscellaneous charges.

Financial aid students who stop attending, withdraw, or are administratively withdrawn from classes before **July 10, 2023** may be subject to a Federal Refund Calculation.

If you are using Financial Aid, please contact the Financial Aid Office prior to withdrawing. Withdrawing from a class is final and you cannot be reinstated. Contact the Admissions and Records Office at [575.769.4025](tel:575.769.4025) or email [admissions@clovis.edu](mailto:admissions@clovis.edu) if you need assistance.

Students with a PFAPP may charge books and supplies **May 30 - June 9, 2023** (based on remaining eligibility).

Visit the Financial Aid Office or call [575.769.4060](tel:575.769.4060) or email [finaid@clovis.edu](mailto:finaid@clovis.edu) for more detailed information.

## SCHOLARSHIPS

CCC has many scholarships available, ranging from \$100 to \$1,000 per year. Students are encouraged to apply for scholarships to lessen the need for loans or part-time work to attend school. These scholarships are made possible by generous contributions to the College and CCC Foundation.

Apply online for dozens of CCC scholarships at [clovis.academicworks.com](https://clovis.academicworks.com).

## SENIOR CITIZEN DISCOUNT

Senior citizens may register beginning **April 11, 2023** and pay the reduced rate of \$5 per credit hour. Senior citizens who register prior to **April 11, 2023** are not eligible for the senior citizen discount. Qualifications for senior citizen discount:

- Must be 65 years of age by **June 16, 2023**
- Must be **classified as a** New Mexico resident
- Must enroll for **10 credit** hours or less during the semester

Senior citizen students must pay any course fees associated with classes. Senior citizens enrolled at CCC and who receive a reduction in tuition are entitled to all rights and privileges afforded all students.

## PAYMENT OPTIONS

**In-person:** Cash, money orders, checks (made payable to Clovis Community College), MasterCard, Visa, Discover, and American Express payments may be made at the cashier's window across from the Bookstore.

**By phone:** Phone in credit card information to [575.769.4132](tel:575.769.4132) or [575.769.4035](tel:575.769.4035).

**Online:** Login to **Pathway** at [pathway.clovis.edu](https://pathway.clovis.edu)

- Click on the **Student Tab**
- Click on **Pay Here** with TouchNet under Registration Tools

## Third-Party Sponsor:

If a third party (i.e., employer or government agency) is paying tuition and fees on a student's behalf, either the student or the third party must provide a copy of the authorization to the cashier at the time of registration.

## Deferred Payment Plan:

CCC offers a deferred payment plan administered by TouchNet Information Solutions. To initiate payment plan, login to Pathway at [pathway.clovis.edu](https://pathway.clovis.edu). Students must have a checking or credit card account to schedule and make payments, and students must be enrolled in at least three credit hours to take advantage of the payment plan. Students should initiate the contract and make initial payment at the time of registration to confirm their registration. Students are charged a non-refundable fee of \$10 to use the deferred payment plan.

## IMPORTANT FAFSA INFORMATION

Financial Aid students meeting the priority deadline of **May 1, 2023** will be guaranteed to have their financial aid processed by the first day of classes. To meet a priority deadline, you must have been admitted to or be currently enrolled in a degree-seeking program at CCC, have submitted a valid FAFSA to the federal government with the results received by CCC, be in good standing for financial aid, and submit all additional documentation required, if any, for the completion of your file. Any required corrections could delay completion of your file. You should login to PATHWAY to check for any outstanding financial aid documents and/or requirements.

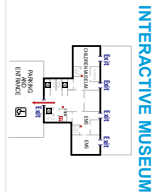
Consumer information for Clovis Community College, including our graduation rates, the median debt of students completing programs, and other important information, can be found at: [clovis.edu/consumerinfo](https://clovis.edu/consumerinfo).



WALKING/JOGGING TRACK

Seventh Street

ALLIED HEALTH AND LIBRARY



Trades Road

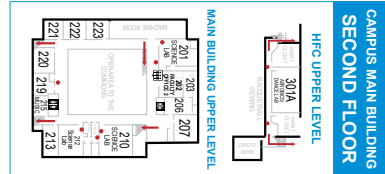
JOE AND CHARLYNE SISLER  
ALLIED HEALTH BUILDING

Schepps Boulevard

CAMPUS MAIN BUILDING  
FIRST FLOOR

MAIN  
ENTRANCE

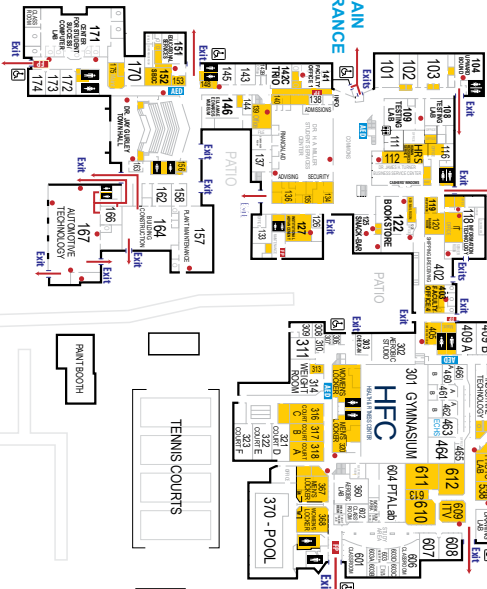
PARKING



PARKING

DR. W. D. DABBS  
LIBRARY

DON AND GUSTENIA BONNER  
NURSING EDUCATION BUILDING



TENNIS COURTS

PAINT BOOTH

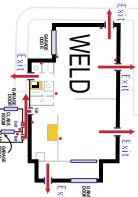
CLASSROOM SOUTH

PARKING

Trades Road

COSMETOLOGY  
CLINIC

KILN/HOT GLASS



STORAGE BATHROOM

GEOLING  
MAINTENANCE  
WORKSHOPS

GLASS  
STORAGE



LOCKER ROOM  
OFFICE  
STORAGE

LEGEND

REST ROOMS HANDICAP ACCESS ELEVATOR





REGISTER ONLINE: [Clovis.edu/register](https://clovis.edu/register)

For list of course and program fees, visit [clovis.edu/fees](https://clovis.edu/fees)